

COMUNE DI BAISO  
Provincia di Reggio Emilia

**BAI 28**

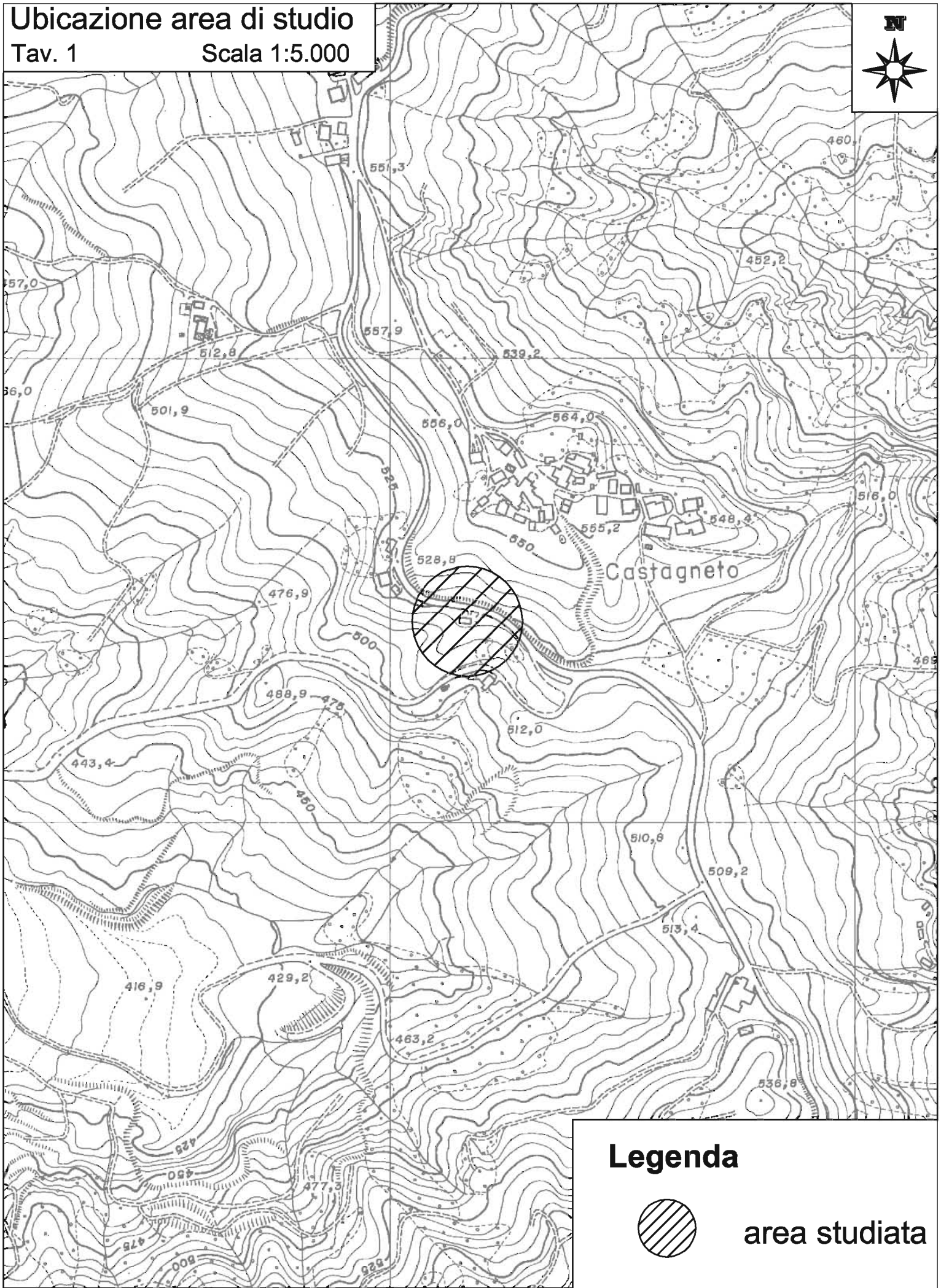
**CENTROGEO SURVEY SNC**

*42015 Correggio (RE) - Piazza S. Quirino, 6 - tel 0522/641001 - Fax: 632162*

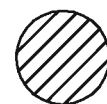
# Ubicazione area di studio

Tav. 1

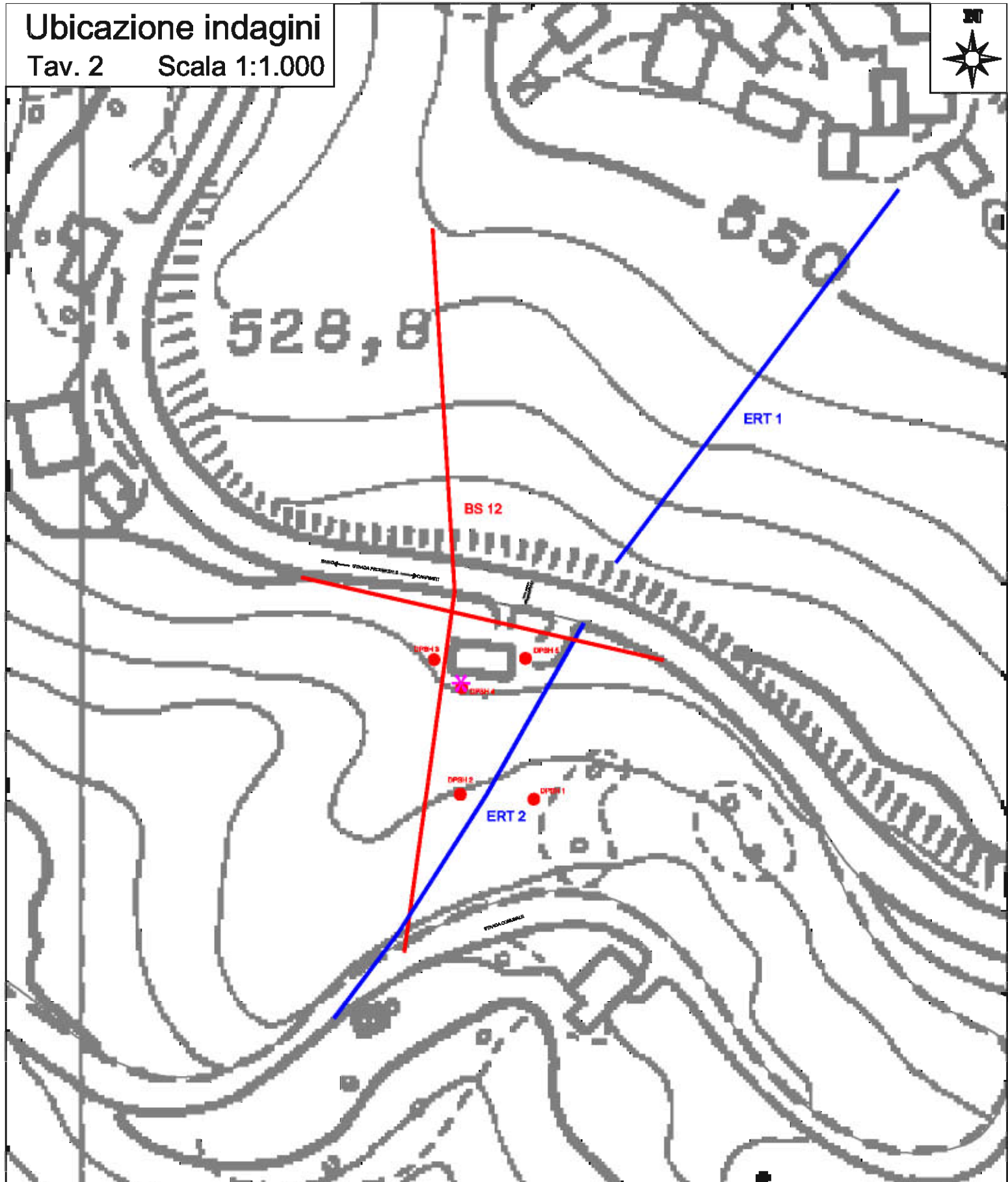
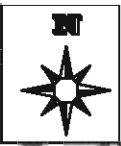
Scala 1:5.000







## Legenda



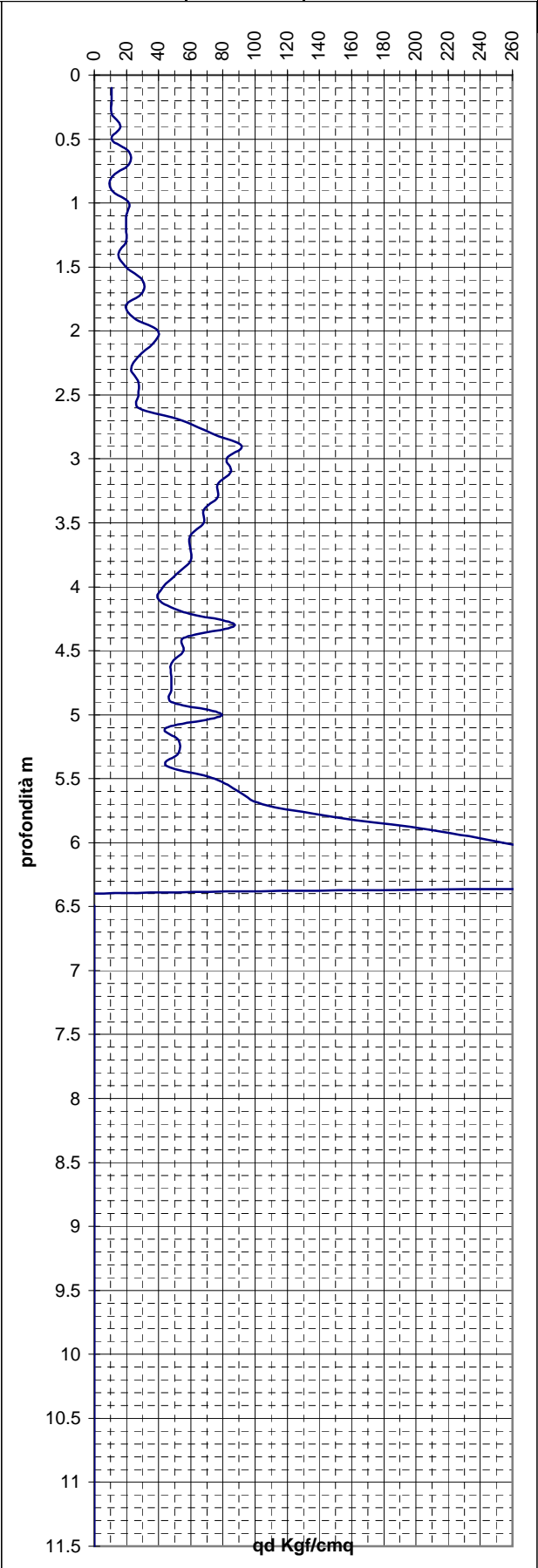
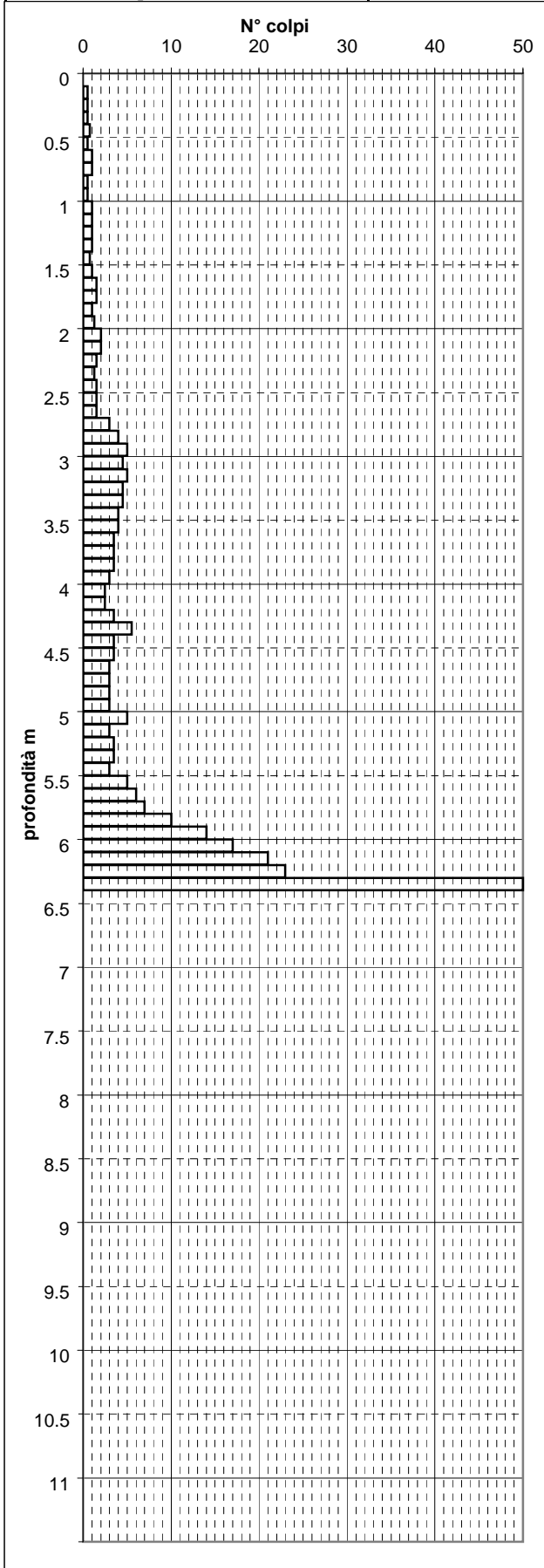
area studiata



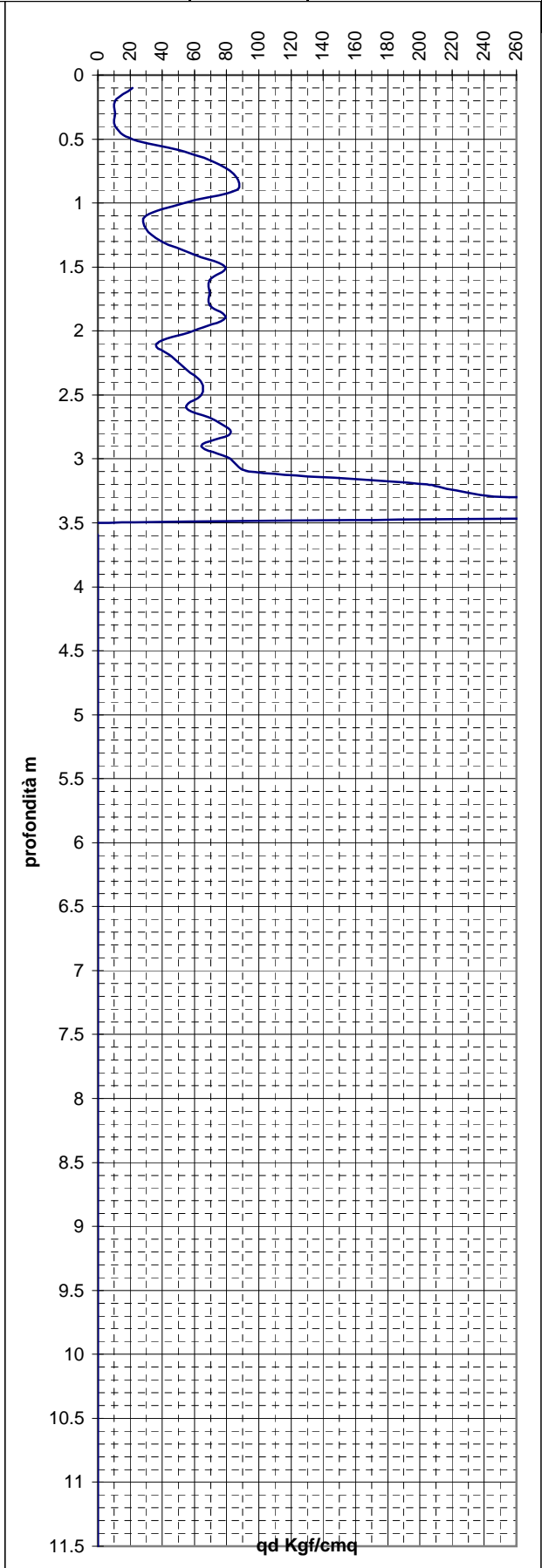
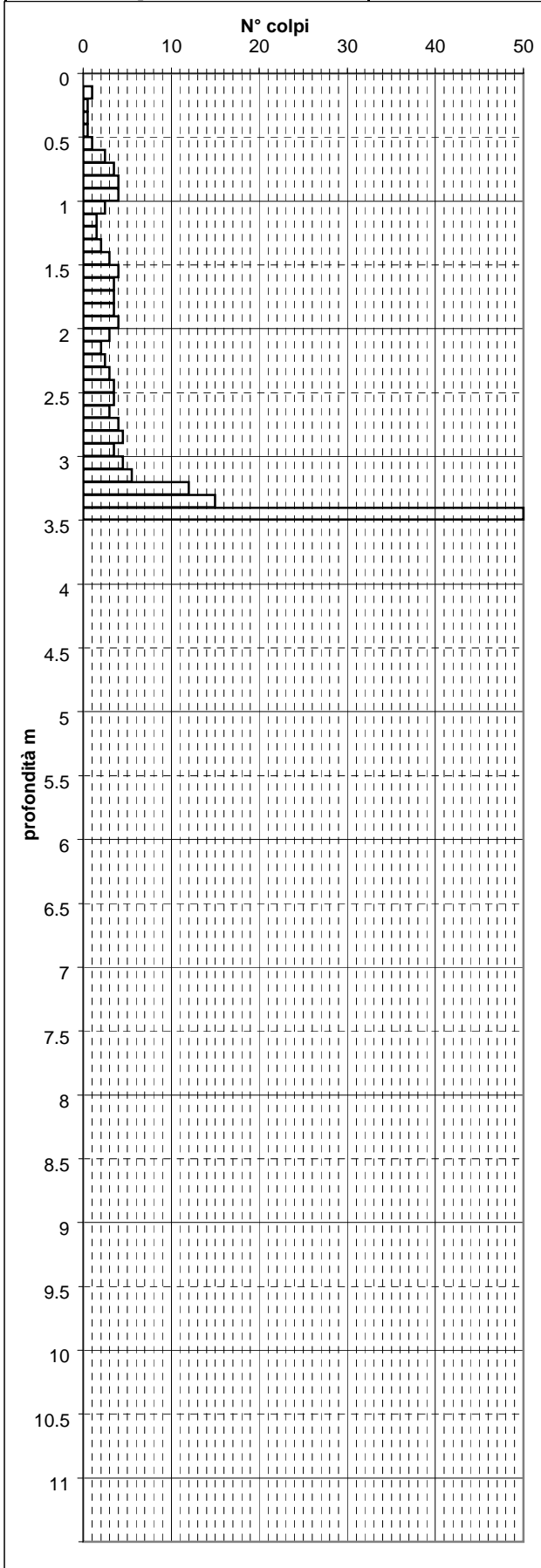
**Legenda**

-  **DPSH 2** Prova penetrometrica dinamica pesante DPSH
-  Base sismica a rifrazione - Re.Mi.
-  Tomografia elettrica
-  Punto acquisizione microtremori

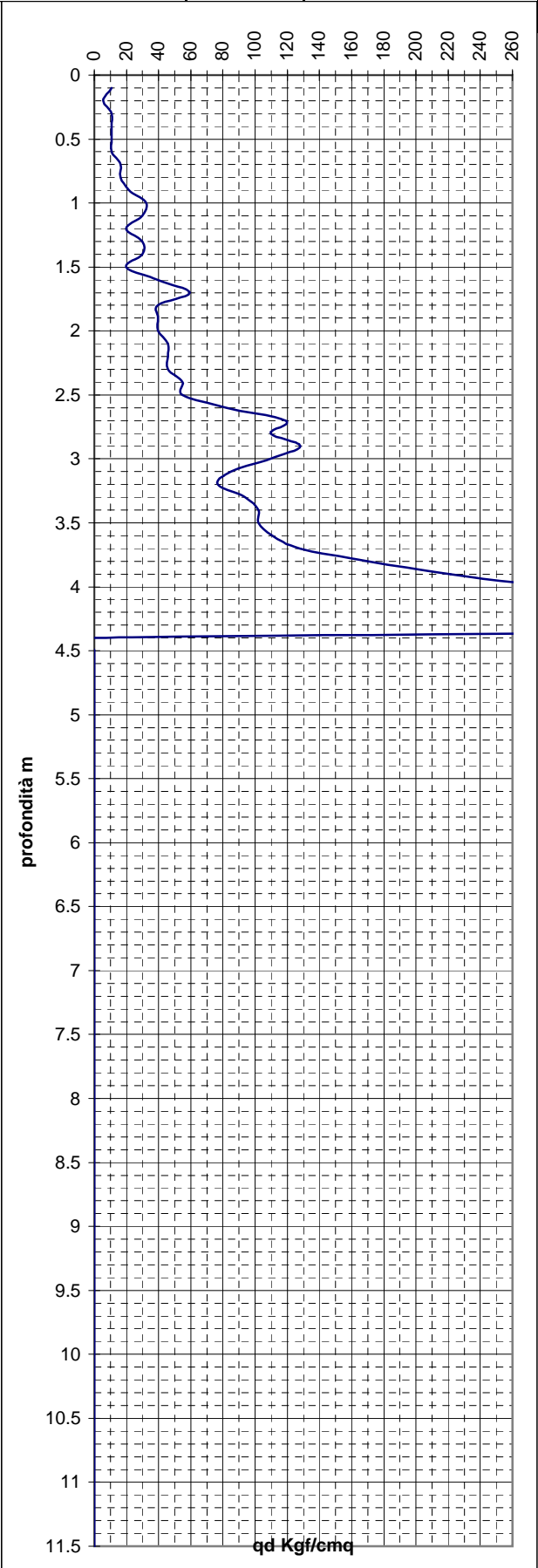
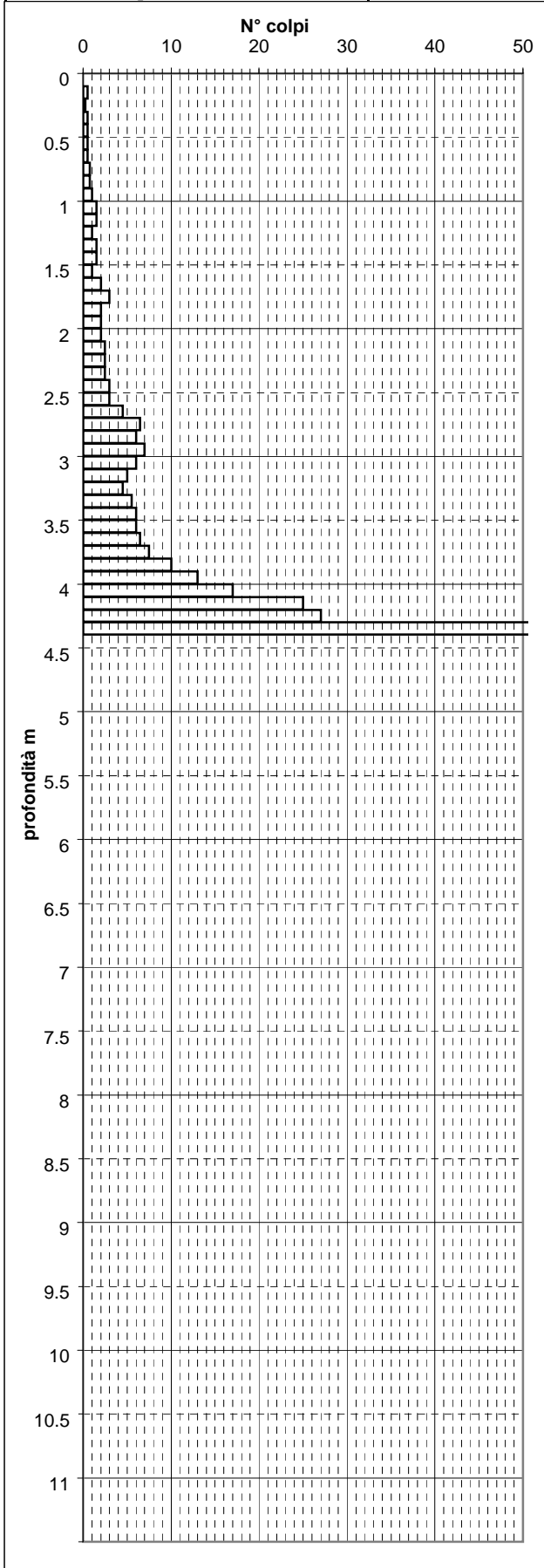
<b>Dott. Geol. Paolo Beretti</b> Via Manot 5, Quattro Castella (RE) Tel e fax 0522 886658 Cell 348 6902667		<b>PROVA PENETROMETRICA</b> D.P.S.H N° 1		<b>COMMITTENTE:</b> Sig.ra Spezzani	
<b>OPERATORE:</b> Dr. Beretti		<b>ATTREZZO:</b> Pen. Statico dinamico Pagani		<b>CANTIERE:</b> Castagneto	
<b>QUOTA:</b> p.c.		<b>Profondità falda:</b> Foro vuoto		<b>DATA:</b> 18/05/2006	



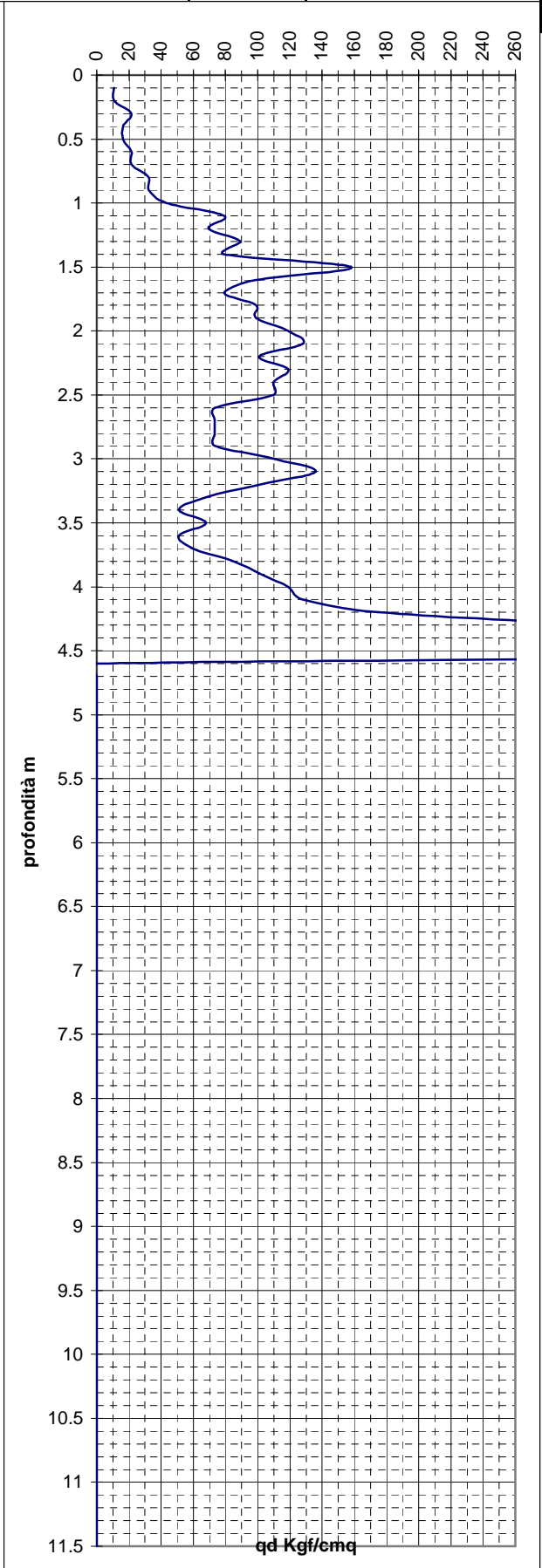
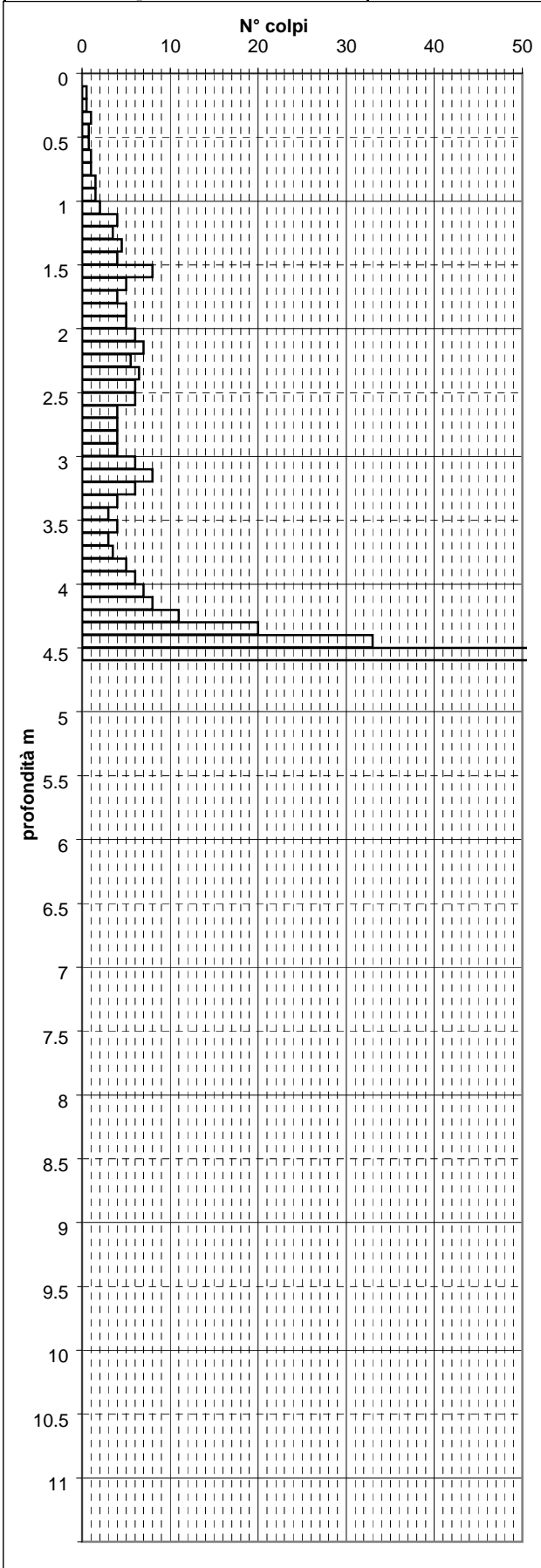
<b>Dott. Geol. Paolo Beretti</b> Via Manot 5, Quattro Castella (RE) Tel e fax 0522 886658 Cell 348 6902667		<b>PROVA PENETROMETRICA</b> D.P.S.H N° 2		<b>COMMITTENTE:</b> Sig.ra Spezzani	
OPERATORE: Dr. Beretti		ATTREZZO: Pen. Statico dinamico Pagani		CANTIERE: Castagneto	
QUOTA: p.c.		Profondità falda: Foro vuoto		DATA: 18/05/2006	



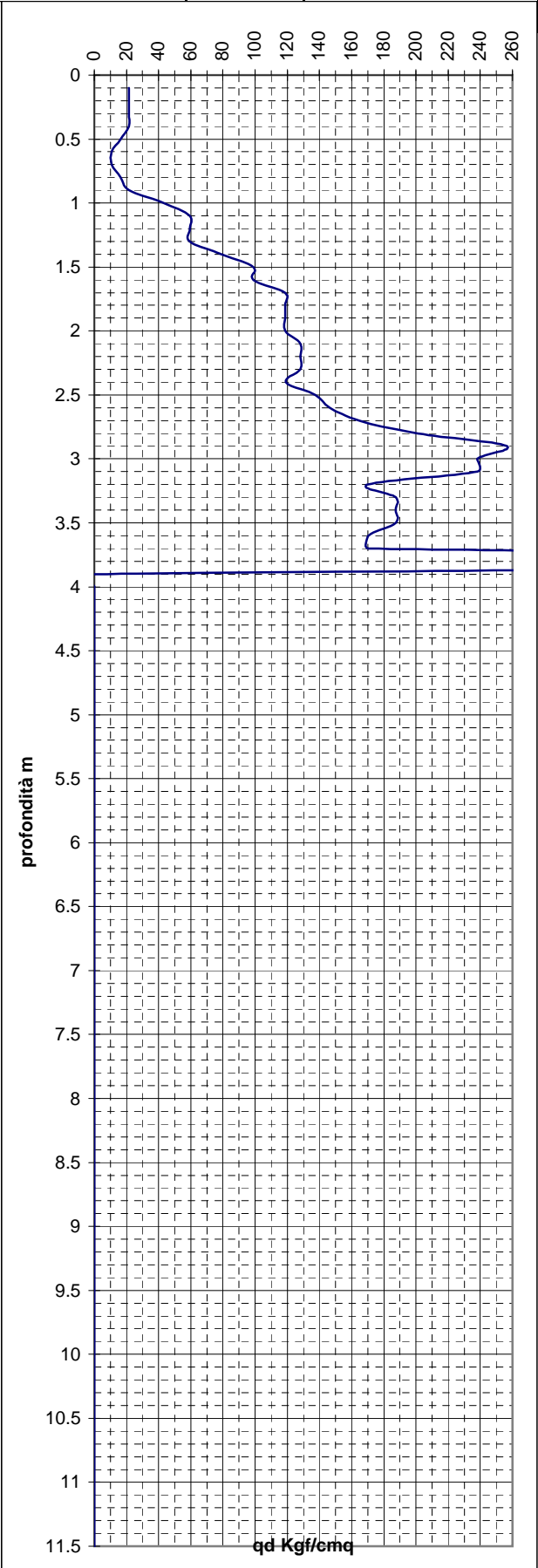
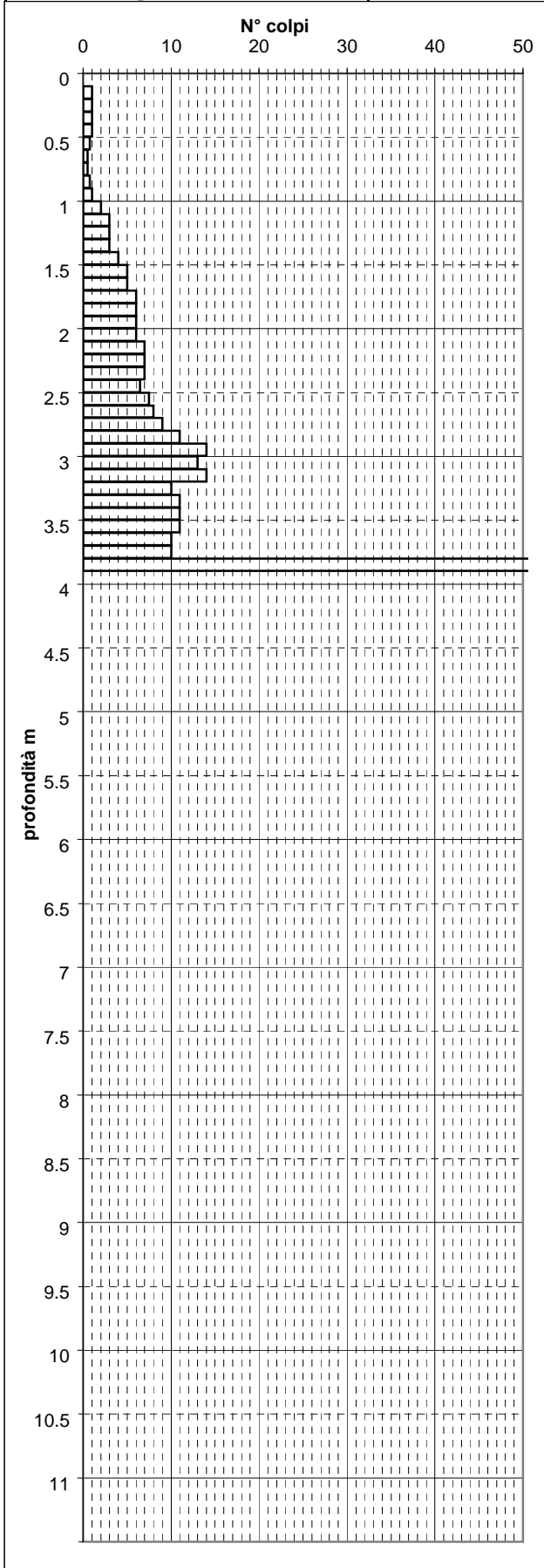
<b>Dott. Geol. Paolo Beretti</b> Via Manot 5, Quattro Castella (RE) Tel e fax 0522 886658 Cell 348 6902667		<b>PROVA PENETROMETRICA</b> D.P.S.H N° 3		<b>COMMITTENTE:</b> Sig.ra Spezzani	
OPERATORE: Dr. Beretti		ATTREZZO: Pen. Statico dinamico Pagani	CANTIERE: Castagneto		
QUOTA: p.c.		Profondità falda: Foro vuoto		DATA: 18/05/2006	



<b>Dott. Geol. Paolo Beretti</b> Via Manot 5, Quattro Castella (RE) Tel e fax 0522 886658 Cell 348 6902667		<b>PROVA PENETROMETRICA</b> D.P.S.H N° 4		<b>COMMITTENTE:</b> Sig.ra Spezzani	
OPERATORE: Dr. Beretti		ATTREZZO: Pen. Statico dinamico Pagani		CANTIERE: Castagneto	
QUOTA: p.c.		Profondità falda: Foro vuoto		DATA: 18/05/2006	

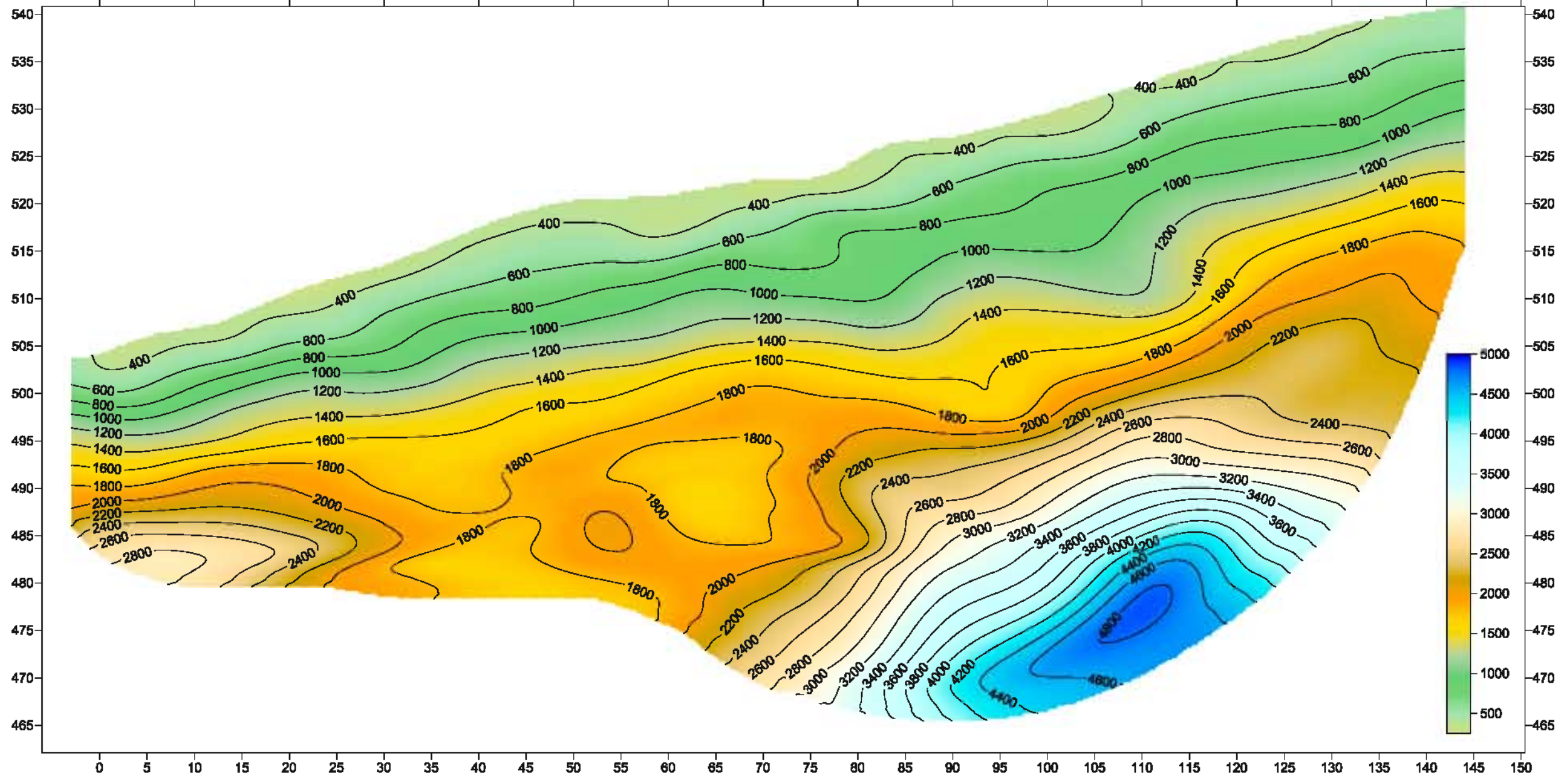


<b>Dott. Geol. Paolo Beretti</b> Via Manot 5, Quattro Castella (RE) Tel e fax 0522 886658 Cell 348 6902667		<b>PROVA PENETROMETRICA</b> D.P.S.H N° 5		<b>COMMITTENTE:</b> Sig.ra Spezzani	
OPERATORE: Dr. Beretti		ATTREZZO: Pen. Statico dinamico Pagani		CANTIERE: Castagneto	
QUOTA: p.c.		Profondità falda: Foro vuoto		DATA: 18/05/2006	

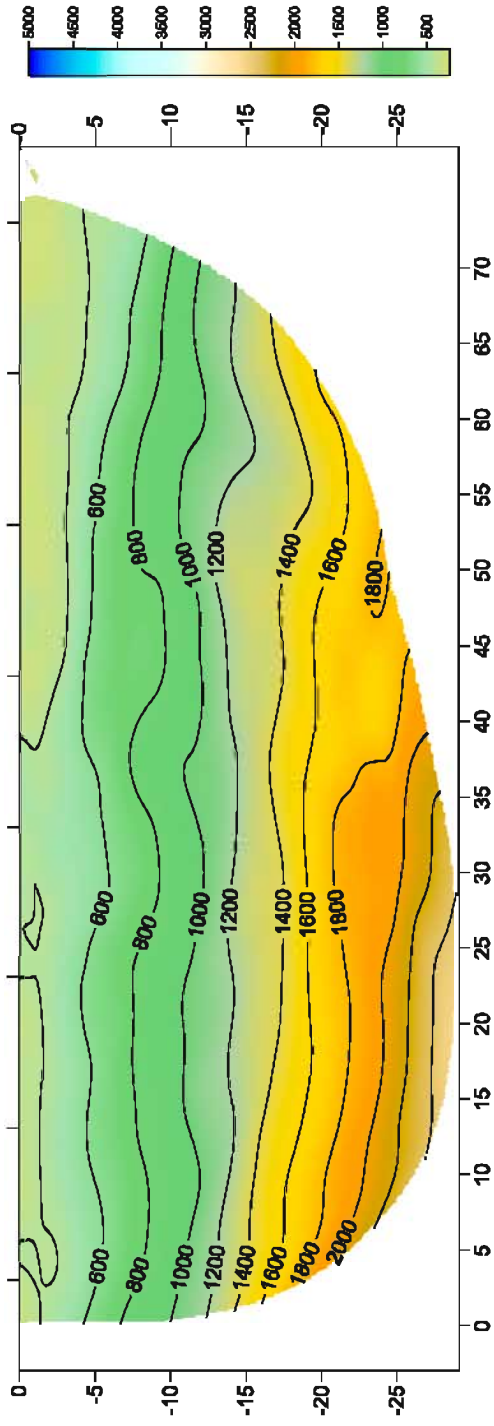


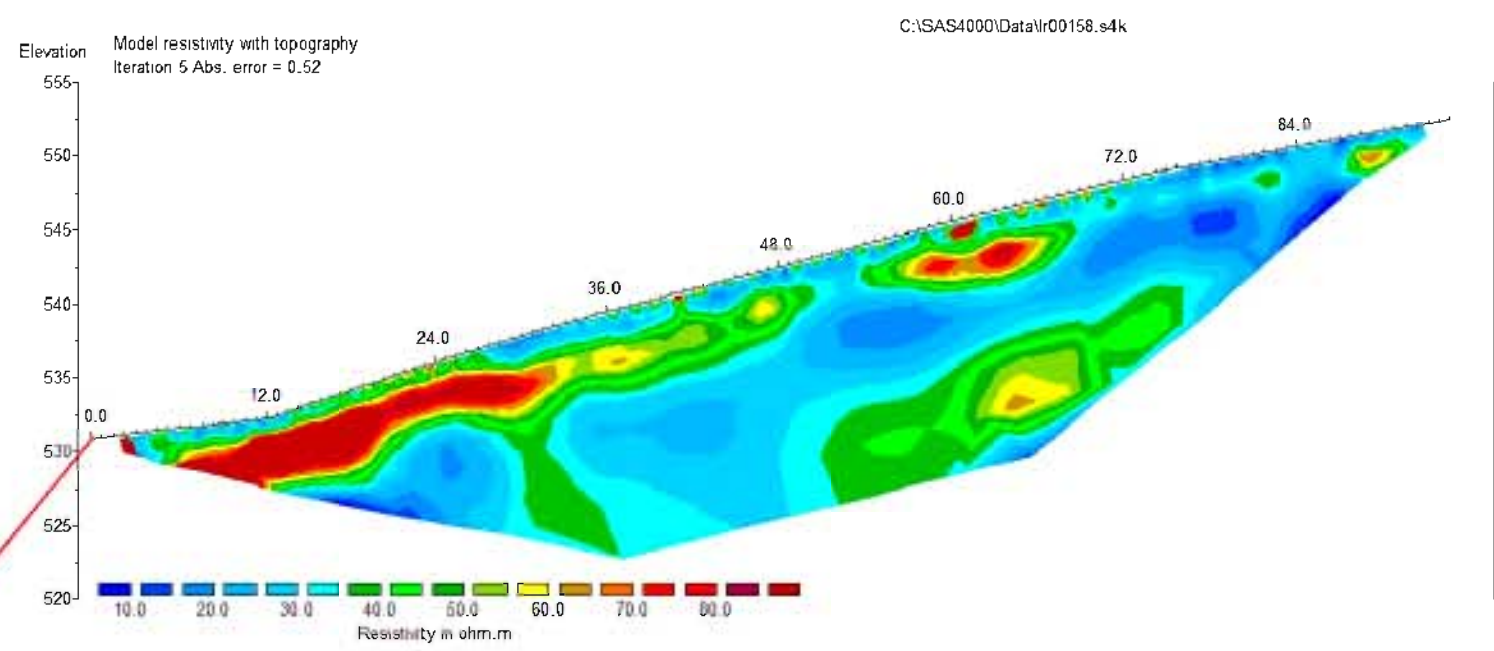
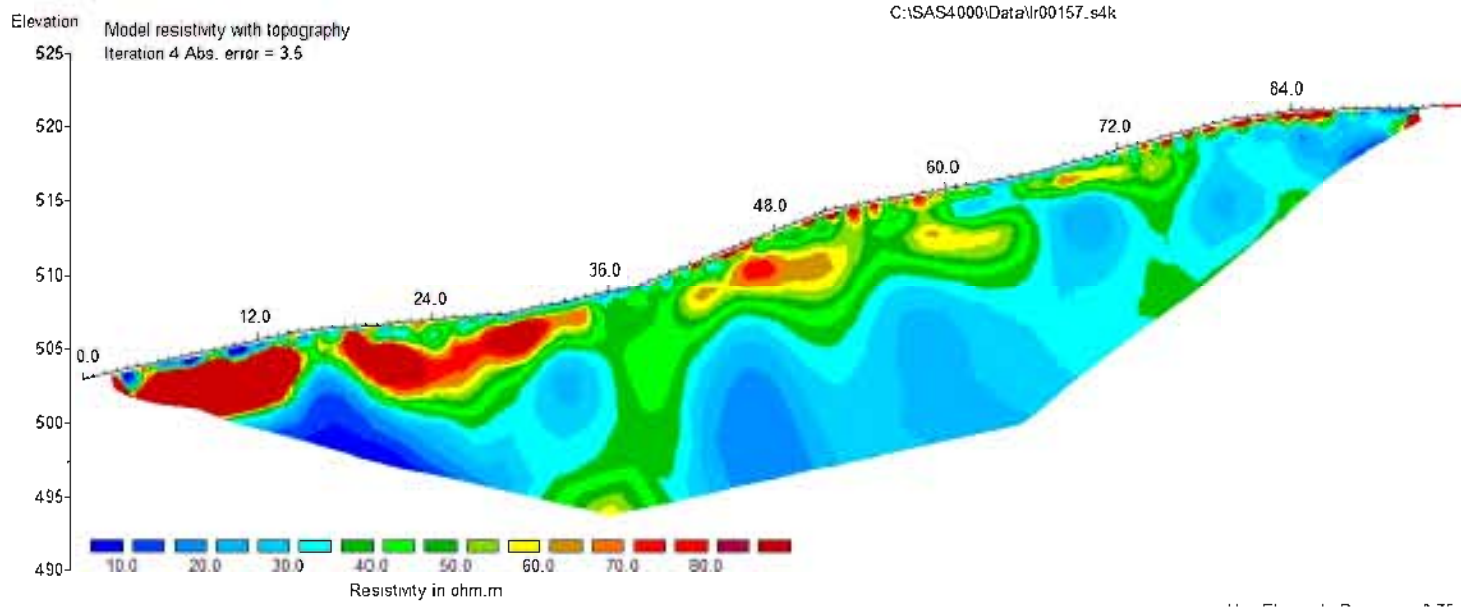


# BS 1\_2



# BS 3

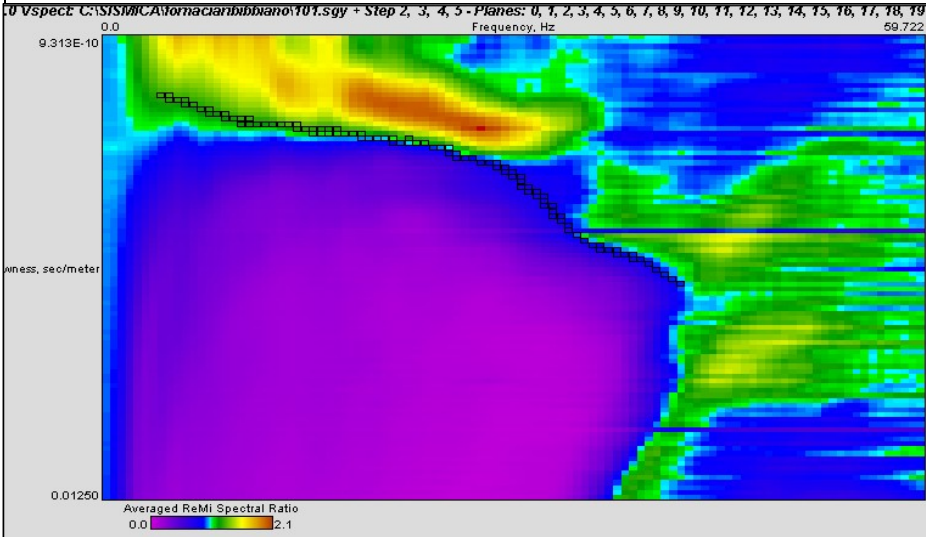




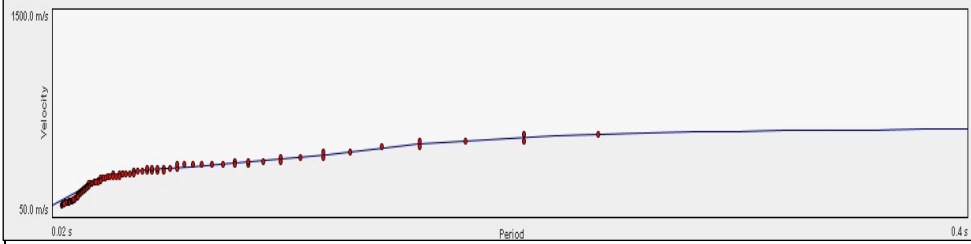
<b>CENTROGEO SURVEY S.n.c.</b> P.zza S.Quirino, 6 - 42015 CORREGGIO	<b>INDAGINE Re.Mi.</b> <b>N° 1</b>
--	---------------------------------------

LOCALITA': Castagneto - Baiso (RE)	COMMITTENTE: Spezzani Loretta
DATA: 21-01-2008	CANTIERE: Via Preda
QUOTA: 500 m slm	OPERATORI: Mazzetti M. - Arbizzi A.

**Spettro di potenza**



**Curva di dispersione**



**Modello interpretativo  
profilo Vs (m/s)**

