

COMUNE DI BAISO
Provincia di Reggio Emilia

BAI 31

CENTROGEO SURVEY SNC

42015 Correggio (RE) - Piazza S. Quirino, 6 - tel 0522/641001 - Fax: 632162



UBICAZIONE AREA.

 AREA STUDIATA

SCALA 1:10.000

TAV. 1

ESTRATTO SEZ. CTR. RER.-VIANO



382,0.

PLANIMETRIA UBICAZIONE
PUNTI DI INDAGINE.

scala 1:1000



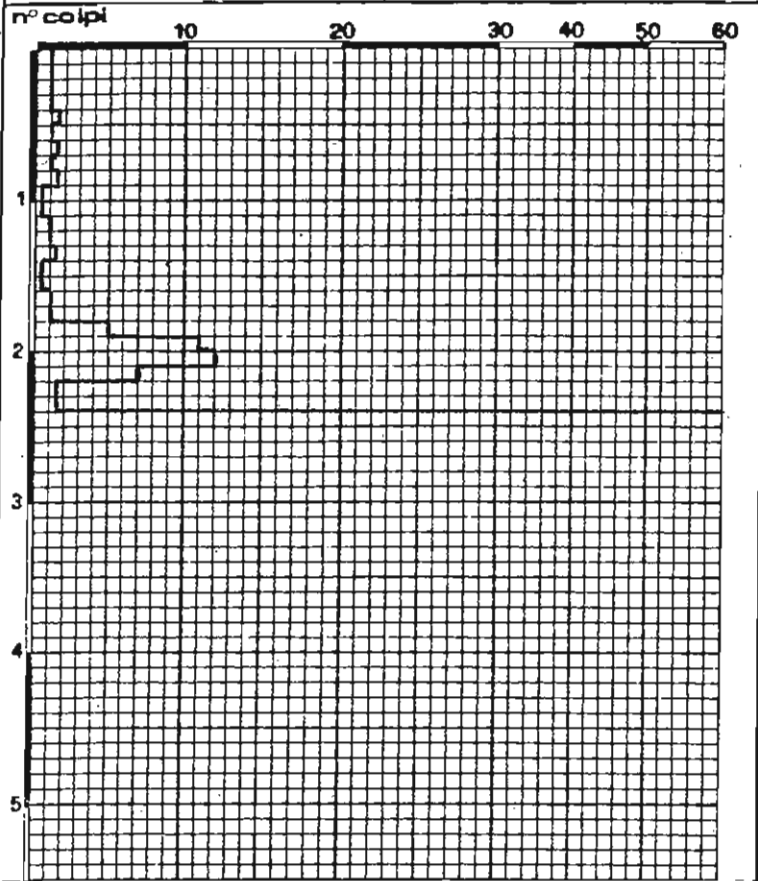
PROVA PENETROMETRICA



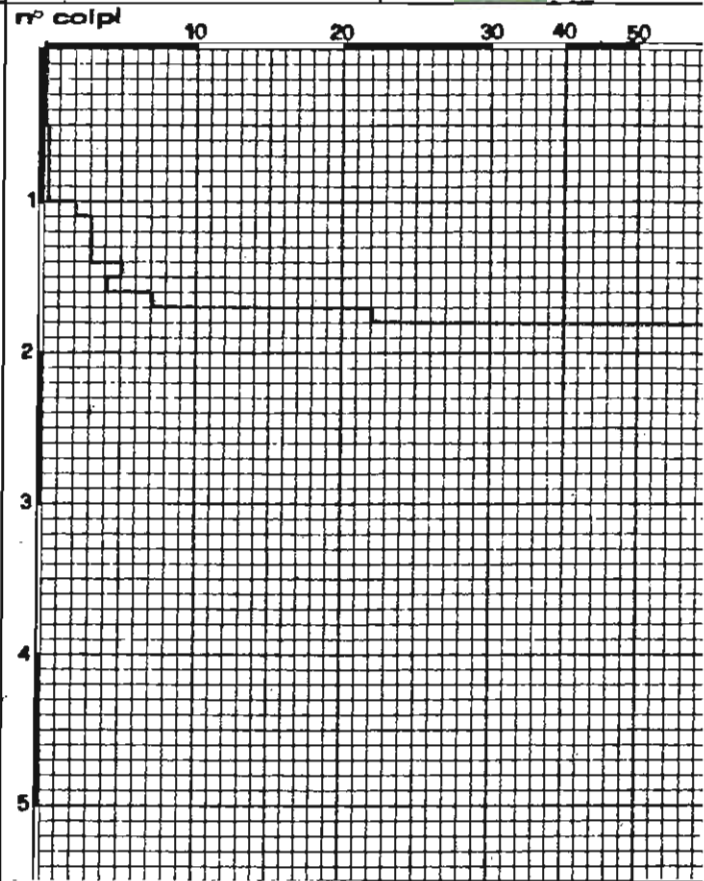
TRACCIA DI BASE SISMICA

TAV. 2

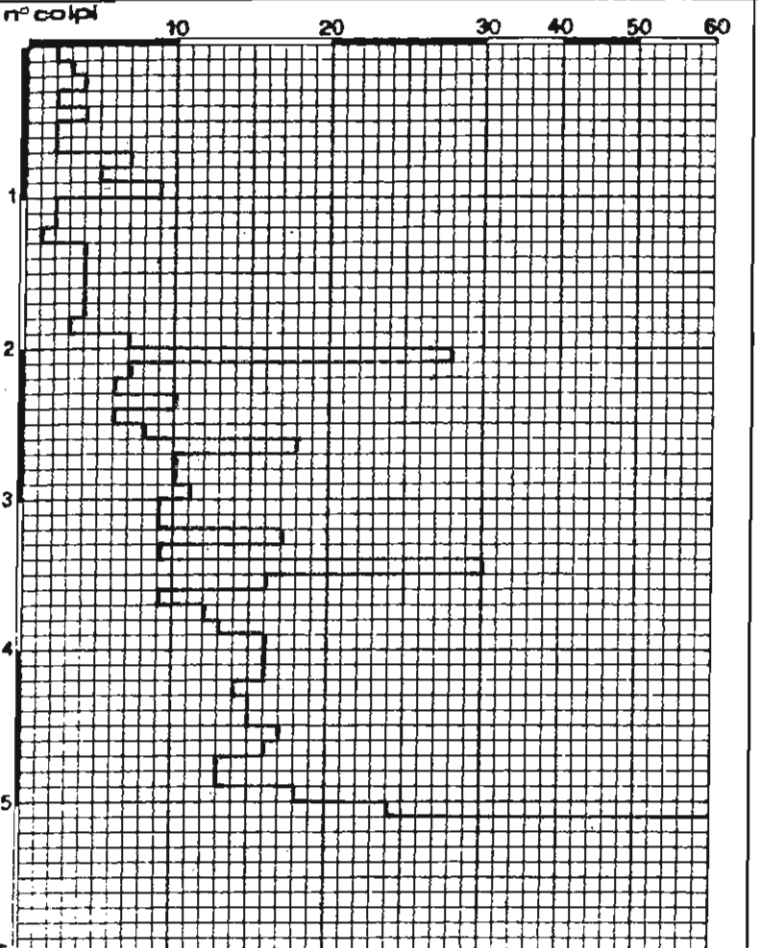
PENETROMETRIA N° 1	
attrezzo PEN.DIN 20 KG	quota P.C.
rif. cartografico	data 29/05/92



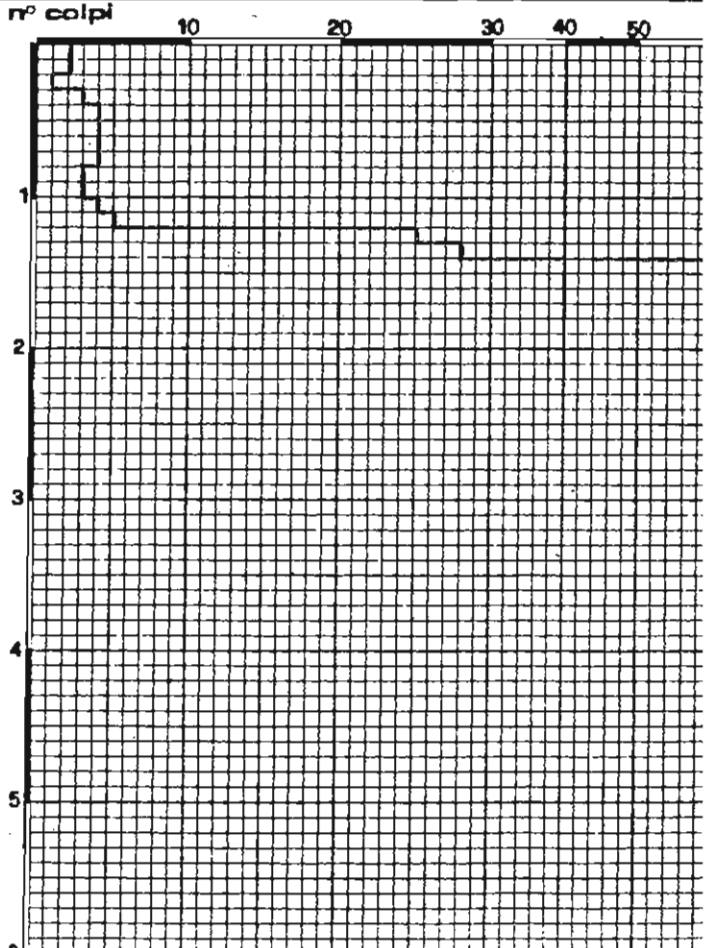
PENETROMETRIA N° 2	
attrezzo PEN.DIN 20KG	quota P.C.
rif. cartografico	data 29/05/92



PENETROMETRIA N° 3	
attrezzo PEN.DIN 20 KG	quota P.C.
rif. cartografico	data 29/05/92

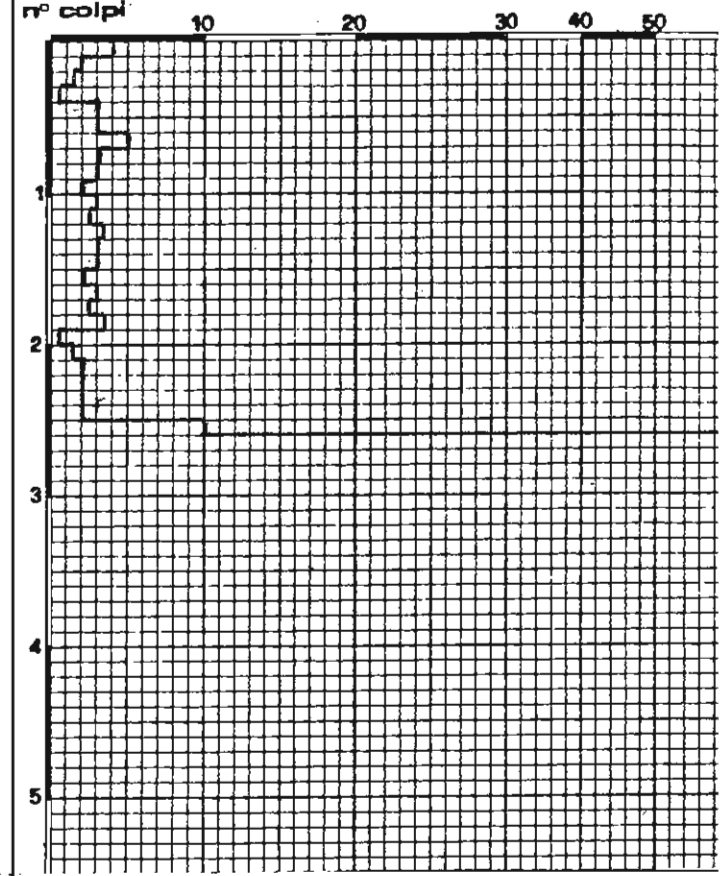
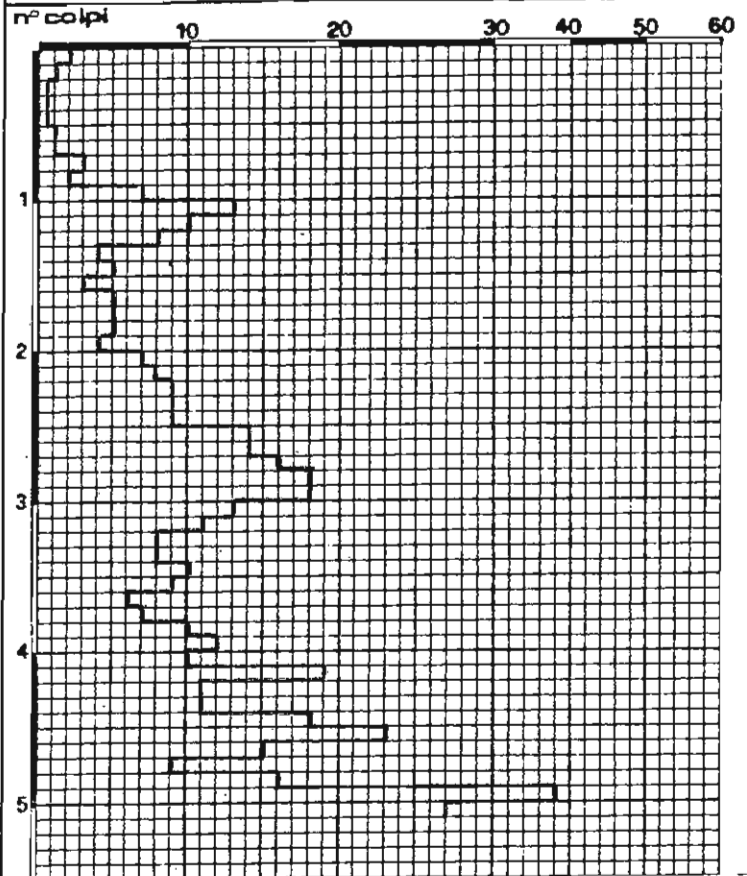


PENETROMETRIA N° 4	
attrezzo PEN.DIN 20 KG	quota P.C.
rif. cartografico	data 29/05/92



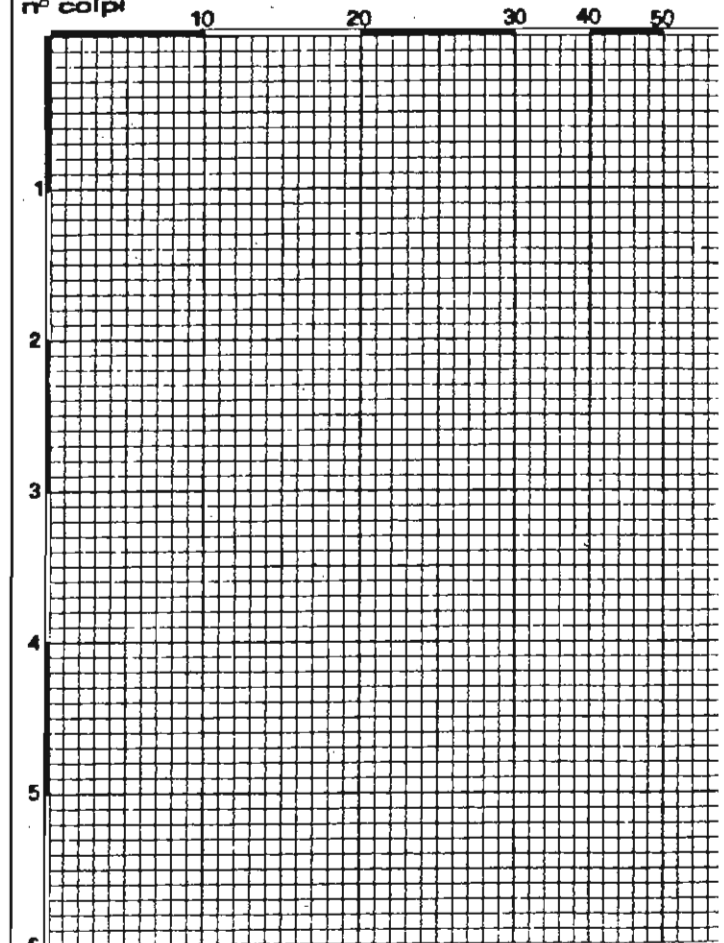
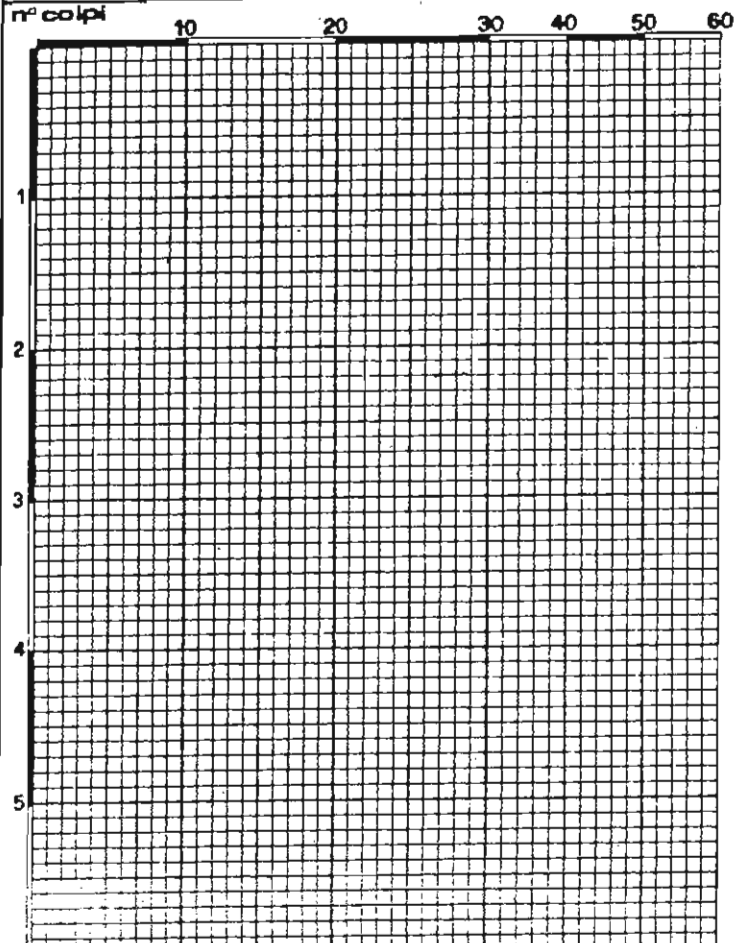
PENETROMETRIA N° 5	
attrezzo PEN DIN 20 KG	quota P.C.
rif. cartografico	data 29/05/92

PENETROMETRIA N° 6	
attrezzo PEN.DIN 20 KG	quota P.C.
rif. cartografico	data 29/05/92







PENETROMETRIA N°	
attrezzo	quota
rif. cartografico	data

PENETROMETRIA N°	
attrezzo	quota
rif. cartografico	data



LEGENDA

-  Tempi dai primi arrivi ai geofoni
-  Profilo topografico
-  Distanza della superficie topografica del limite di strato all'involuppo dagli archi
-  Velocità sismica dello strato in metri al secondo

PROSPERZIONE SISMICA Briglia

COOPERATIVA NAZIONALE
Comit. DI LAVORO DI BAISO

Base sismica : sromi

All. 1 3-6-1992

