

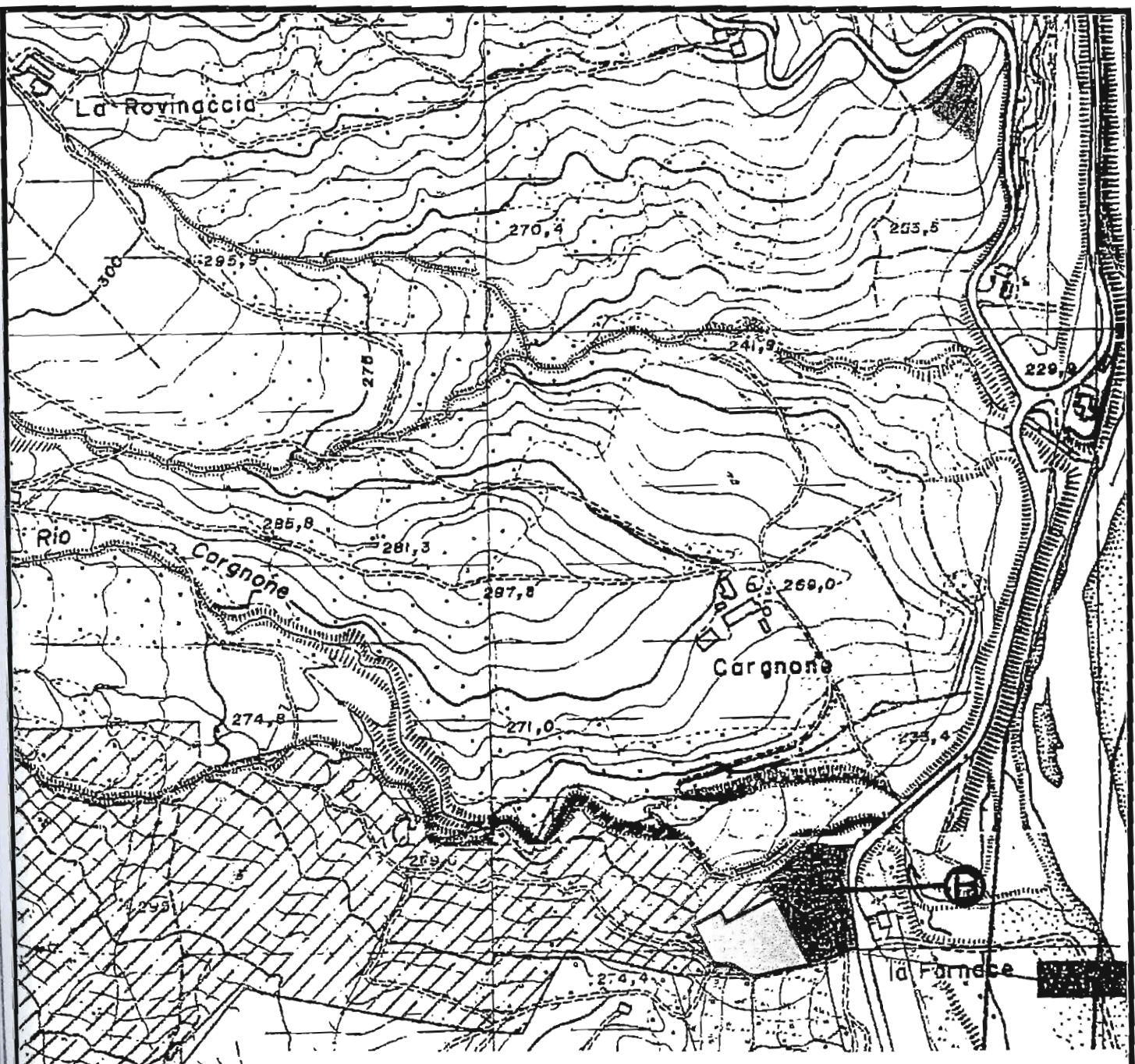
COMUNE DI BAISO  
Provincia di Reggio Emilia

**BAI 59**

**CENTROGEO SURVEY SNC**

*42015 Correggio (RE) - Piazza S. Quirino, 6 - tel 0522/641001 - Fax: 632162*

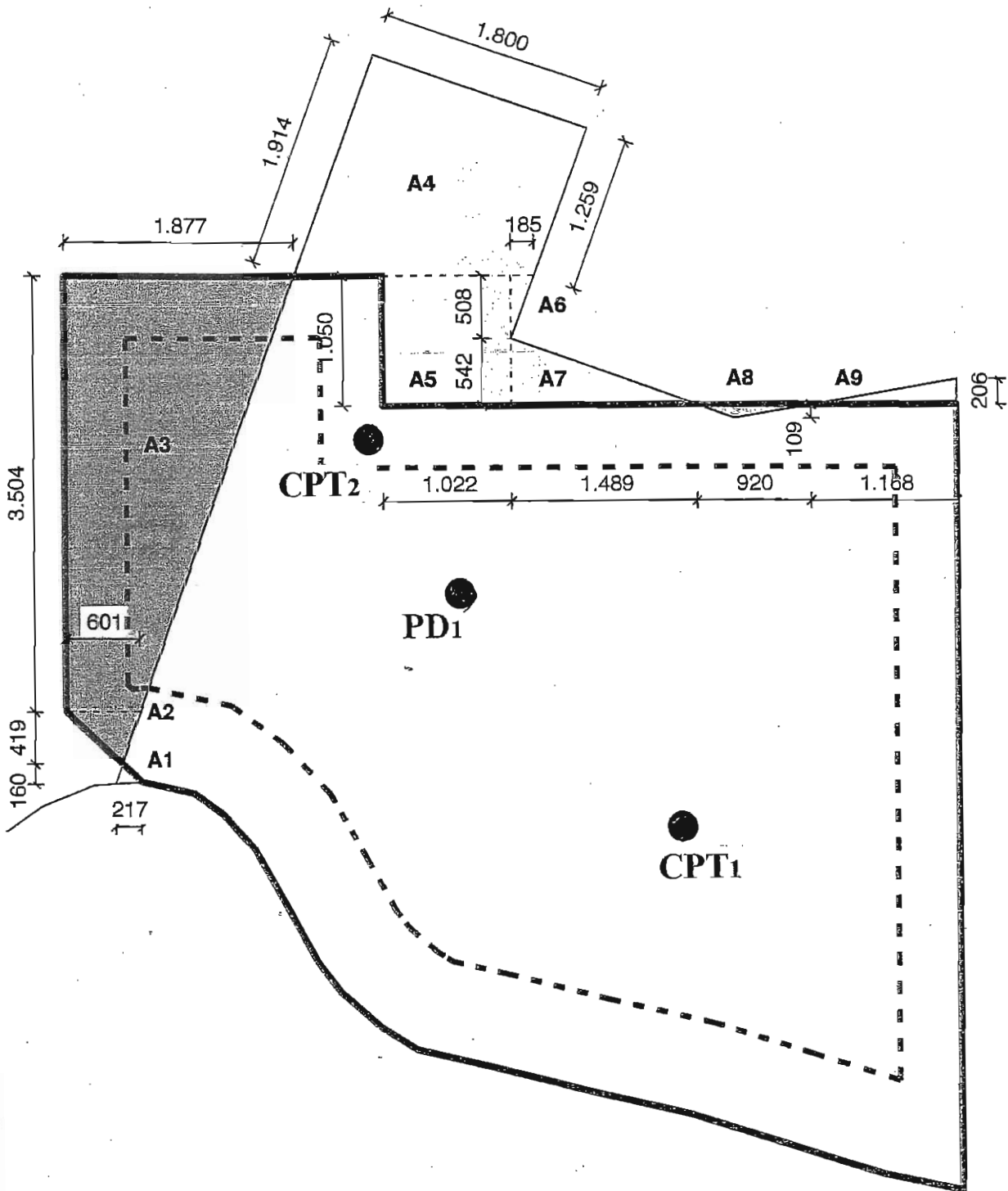
CONSERVATORI • ORDINE DEGLI ARCHITETTI  
PIAMMIFICATORI PAESAGGISTI  
PROVINCIA DI MODENA  
ARCHITETTO  
PAOLO BORGHI  
390



ESTRATTO DI P.R.G. - PROPOSTA DI VARIANTE  
ART.35 - Zona artigianale di completamento

Scala 1 / 5.000

312,5



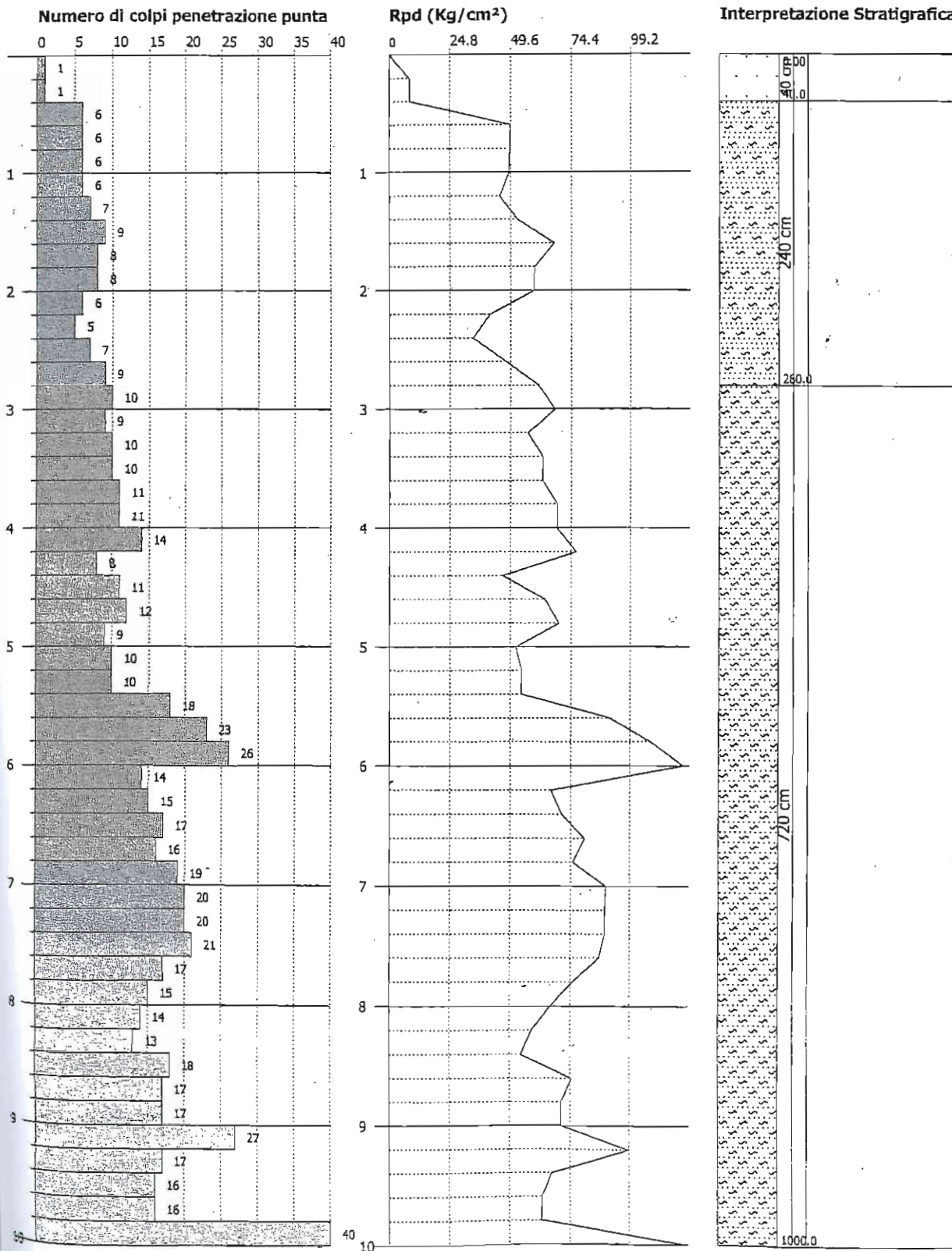
**PLANIMETRIA IN SCALA 1 : 500**  
**CON UBICAZIONE DELLE INDAGINI DIRETTE:**  
**CPT1 - Prove penetrometriche statiche**  
**PD1 - Prove penetrometriche dinamiche**

**PROVA PENETROMETRICA DINAMICA Nr.1**  
**DIAGRAMMA NUMERO COLPI PUNTA-Rpd**

Committente : Gastronomia Piccinini  
 Cantiere : La Fornace  
 Località : Comune di Baiso

Data :10/03/2003

Scala 1:50



**PROVA PENETROMETRICA STATICA  
LETTURE DI CAMPAGNA / VALORI DI RESISTENZA**

**CPT 1**

3.010496-121.

- committente:	DITTA GASTRONOMICA PICCININI	- data prova :	18/03/2005
- lavoro:	PROVE PENETROMETRICHE STATICHE	- quota inizio :	Piano Campagna
- località:	BAISO (RE) LOCALITA' CARNIONE n° 3	- prof. falda :	Falda non rilevata
- resp. cantiere:		- data emiss. :	21/03/2005
- assist. cantiere:			

prf	LP	LL	Rp	RL	Rp/RI	prf	LP	LL	Rp	RL	Rp/RI
m	Kg/cm <sup>2</sup>	Kg/cm <sup>2</sup>	Kg/cm <sup>2</sup>	Kg/cm <sup>2</sup>	-	m	Kg/cm <sup>2</sup>	Kg/cm <sup>2</sup>	Kg/cm <sup>2</sup>	Kg/cm <sup>2</sup>	-
0,20	6,0	12,0	6,0	0,40	15,0	2,60	57,0	128,0	57,0	6,33	9,0
0,40	7,0	13,0	7,0	0,33	21,0	2,80	53,0	148,0	53,0	5,67	9,0
0,60	7,0	12,0	7,0	1,20	6,0	3,00	56,0	141,0	56,0	5,87	10,0
0,80	14,0	32,0	14,0	2,00	7,0	3,20	65,0	153,0	65,0	6,27	10,0
1,00	16,0	46,0	16,0	4,73	3,0	3,40	55,0	149,0	55,0	4,93	11,0
1,20	48,0	119,0	48,0	3,27	15,0	3,60	62,0	136,0	62,0	5,33	12,0
1,40	61,0	110,0	61,0	4,00	15,0	3,80	82,0	162,0	82,0	5,20	16,0
1,60	53,0	113,0	53,0	3,93	13,0	4,00	49,0	127,0	49,0	6,27	8,0
1,80	55,0	114,0	55,0	4,53	12,0	4,20	55,0	149,0	55,0	6,20	9,0
2,00	60,0	128,0	60,0	5,00	12,0	4,40	64,0	157,0	64,0	6,60	10,0
2,20	58,0	133,0	58,0	5,60	10,0	4,60	56,0	155,0	56,0	---	---
2,40	62,0	146,0	62,0	4,73	13,0						

- PENETROMETRO STATICO tipo da 10 t - (senza anello allargatore) -  
 - COSTANTE DI TRASFORMAZIONE Ct = 10 - Velocità Avanzamento punta 2 cm/s  
 - punta meccanica tipo Begemann ø = 35.7 mm (area punta 10 cm<sup>2</sup> - apertura 60°)  
 - manicotto laterale (superficie 150 cm<sup>2</sup>)

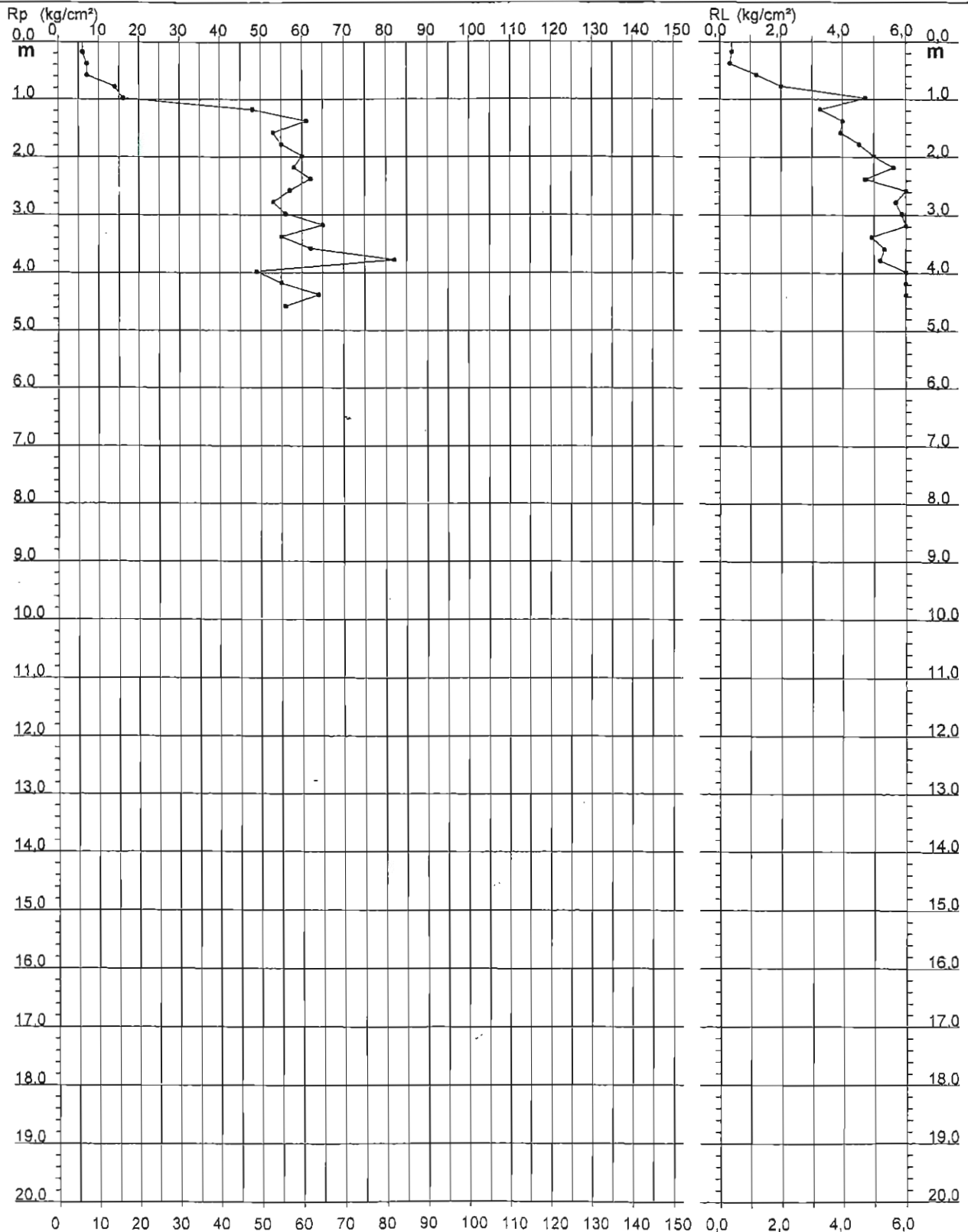
**PROVA PENETROMETRICA STATICA  
DIAGRAMMA DI RESISTENZA**

**CPT 1**

3.010496-121

- committente: DITTA GASTRONOMICA PICCININI  
- lavoro: PROVE PENETROMETRICHE STATICHE  
- località: BAISO (RE) LOCALITA' CARNIONE n° 3  
- resp. cantiere:  
- assist. cantiere:

- data prova : 18/03/2005  
- quota inizio : Piano Campagna  
- prof. falda : Falda non rilevata  
- scala vert.: 1 : 100  
- data emiss. : 21/03/2005



**PROVA PENETROMETRICA STATICA  
LETTURE DI CAMPAGNA / VALORI DI RESISTENZA****CPT 2**

3.010496-121

- committente:	DITTA GASTRONOMICA PICCININI	- data prova :	18/03/2005
- lavoro:	PROVE PENETROMETRICHE STATICHE	- quota inizio :	Piano Campagna
- località:	BAISO (RE) LOCALITA' CARNIONE n° 3	- prof. falda :	Falda non rilevata
- resp. cantiere:		- data emiss. :	21/03/2005
- assist. cantiere:			

prf	LP	LL	Rp	RL	Rp/RI	prf	LP	LL	Rp	RL	Rp/RI
m	Kg/cm <sup>2</sup>	Kg/cm <sup>2</sup>	Kg/cm <sup>2</sup>	Kg/cm <sup>2</sup>	-	m	Kg/cm <sup>2</sup>	Kg/cm <sup>2</sup>	Kg/cm <sup>2</sup>	Kg/cm <sup>2</sup>	-
0,20	13,0	42,0	13,0	1,07	12,0	3,40	13,0	22,0	13,0	0,87	15,0
0,40	27,0	43,0	27,0	1,00	27,0	3,60	10,0	23,0	10,0	0,67	15,0
0,60	18,0	33,0	18,0	0,87	21,0	3,80	11,0	21,0	11,0	0,60	18,0
0,80	17,0	30,0	17,0	1,00	17,0	4,00	14,0	23,0	14,0	1,13	12,0
1,00	7,0	22,0	7,0	1,13	6,0	4,20	13,0	30,0	13,0	3,20	4,0
1,20	7,0	24,0	7,0	0,60	12,0	4,40	33,0	81,0	33,0	1,40	24,0
1,40	8,0	17,0	8,0	0,60	13,0	4,60	16,0	37,0	16,0	1,20	13,0
1,60	6,0	15,0	6,0	0,53	11,0	4,80	24,0	42,0	24,0	3,60	7,0
1,80	8,0	16,0	8,0	0,40	20,0	5,00	33,0	87,0	33,0	3,73	9,0
2,00	4,0	10,0	4,0	0,27	15,0	5,20	140,0	196,0	140,0	6,07	23,0
2,20	4,0	8,0	4,0	0,33	12,0	5,40	103,0	194,0	103,0	5,00	21,0
2,40	4,0	9,0	4,0	0,27	15,0	5,60	36,0	111,0	36,0	3,80	9,0
2,60	5,0	9,0	5,0	0,27	19,0	5,80	29,0	86,0	29,0	2,93	10,0
2,80	4,0	8,0	4,0	0,40	10,0	6,00	24,0	68,0	24,0	2,67	9,0
3,00	6,0	12,0	6,0	0,47	13,0	6,20	30,0	70,0	30,0	6,80	4,0
3,20	10,0	17,0	10,0	0,60	17,0	6,40	150,0	252,0	150,0	—	—

- PENETROMETRO STATICO tipo da 10 t - (senza anello allargatore) -
- COSTANTE DI TRASFORMAZIONE Ct = 10 - Velocità Avanzamento punta 2 cm/s
- punta meccanica tipo Begemann  $\varnothing = 35.7$  mm (area punta 10 cm<sup>2</sup> - apertura 60°)
- manicotto laterale (superficie 150 cm<sup>2</sup>)

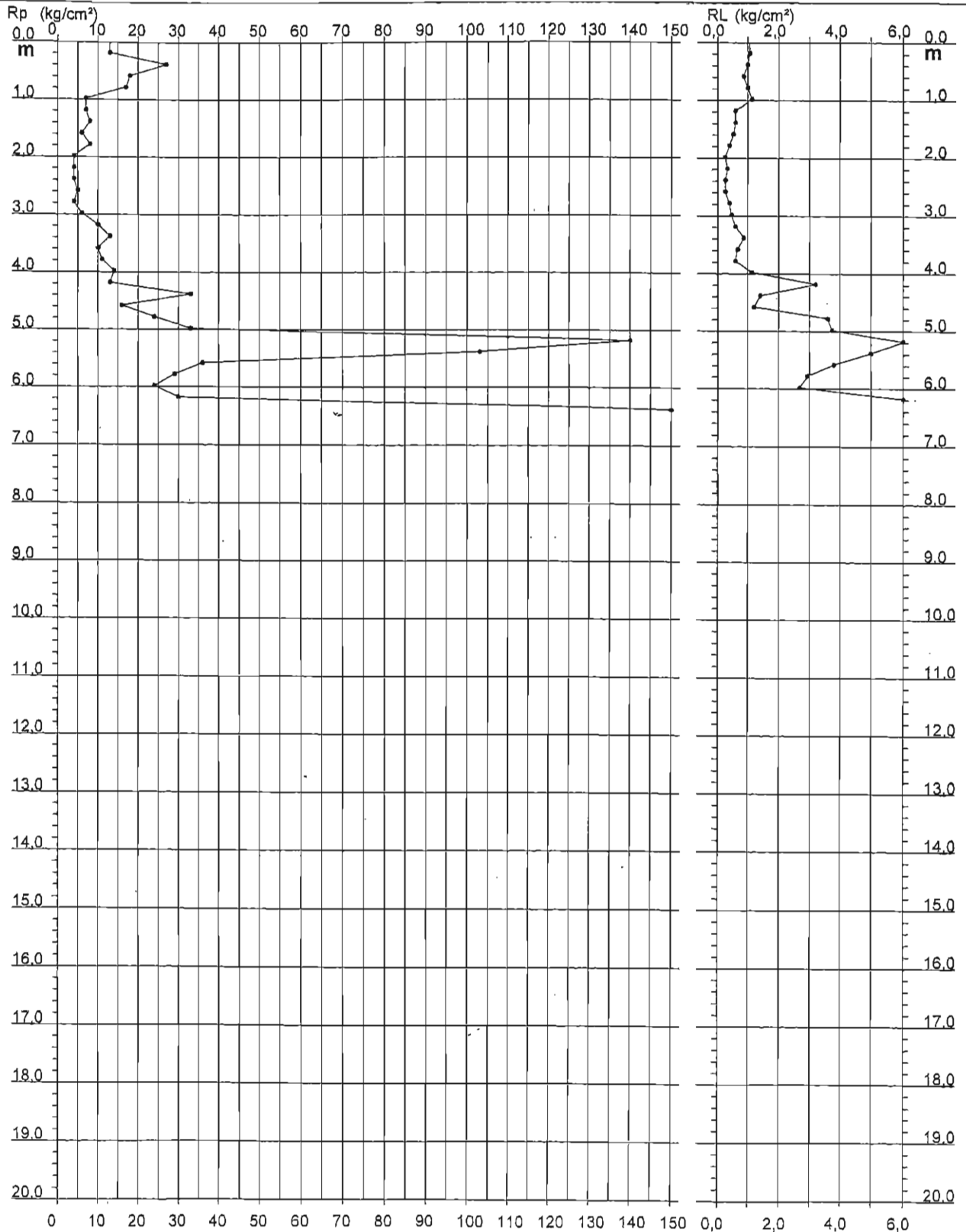
**PROVA PENETROMETRICA STATICA  
DIAGRAMMA DI RESISTENZA**

**CPT 2**

3.010496-121

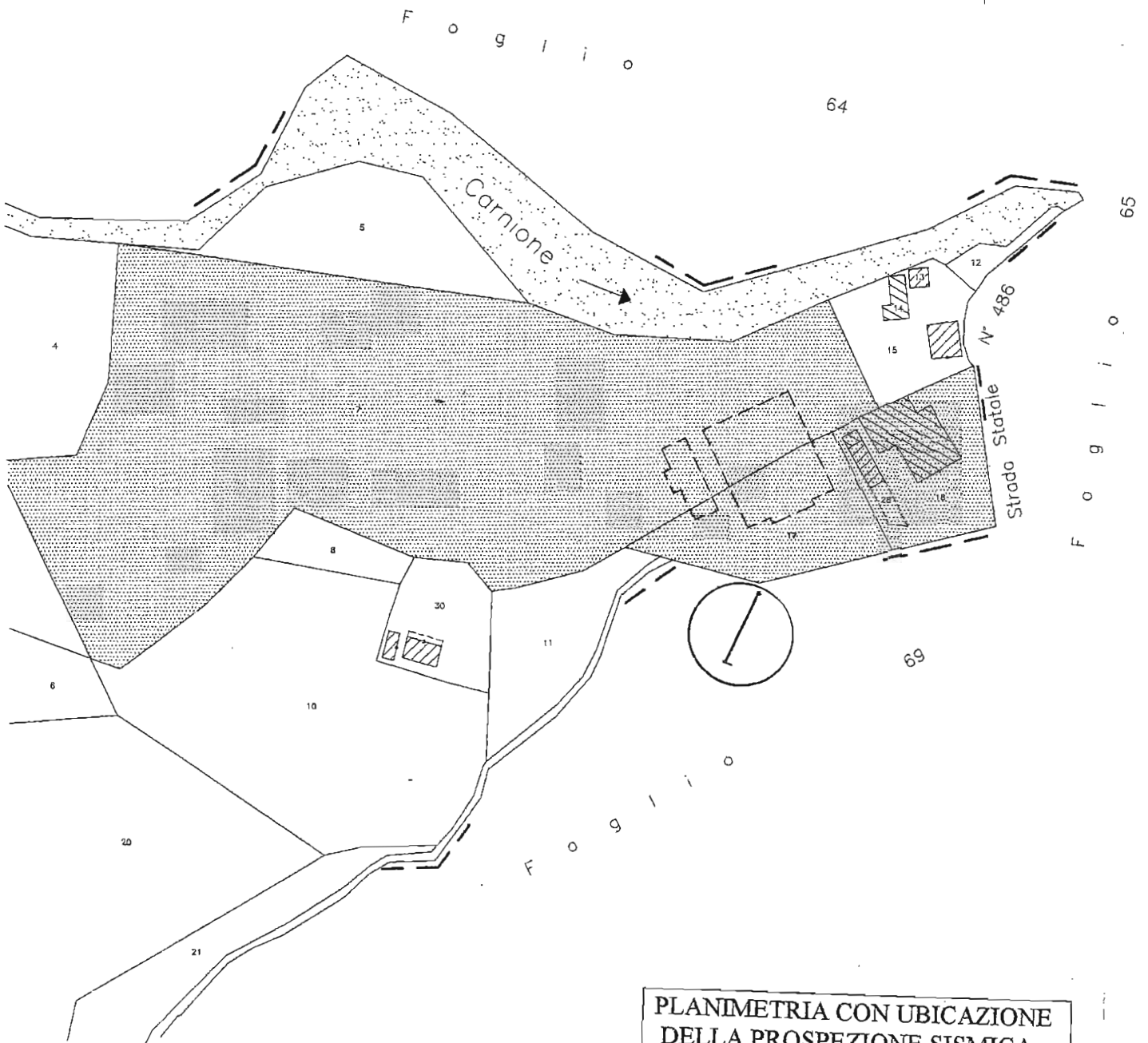
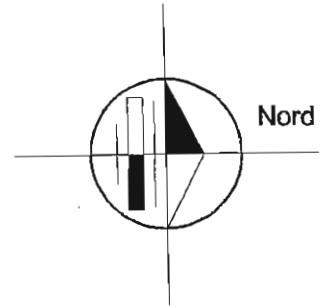
- committente: DITTA GASTRONOMICA PICCININI  
- lavoro: PROVE PENETROMETRICHE STATICHE  
- localit : BAISO (RE) LOCALITA' CARNIONE n  3  
- resp. cantiere:  
- assist. cantiere:

- data prova : 18/03/2005  
- quota inizio : Piano Campagna  
- prof. falda : Falda non rilevata  
- scala vert.: 1 : 100  
- data emiss. : 21/03/2005





 RAGIONI DITTA RICHIEDENTE



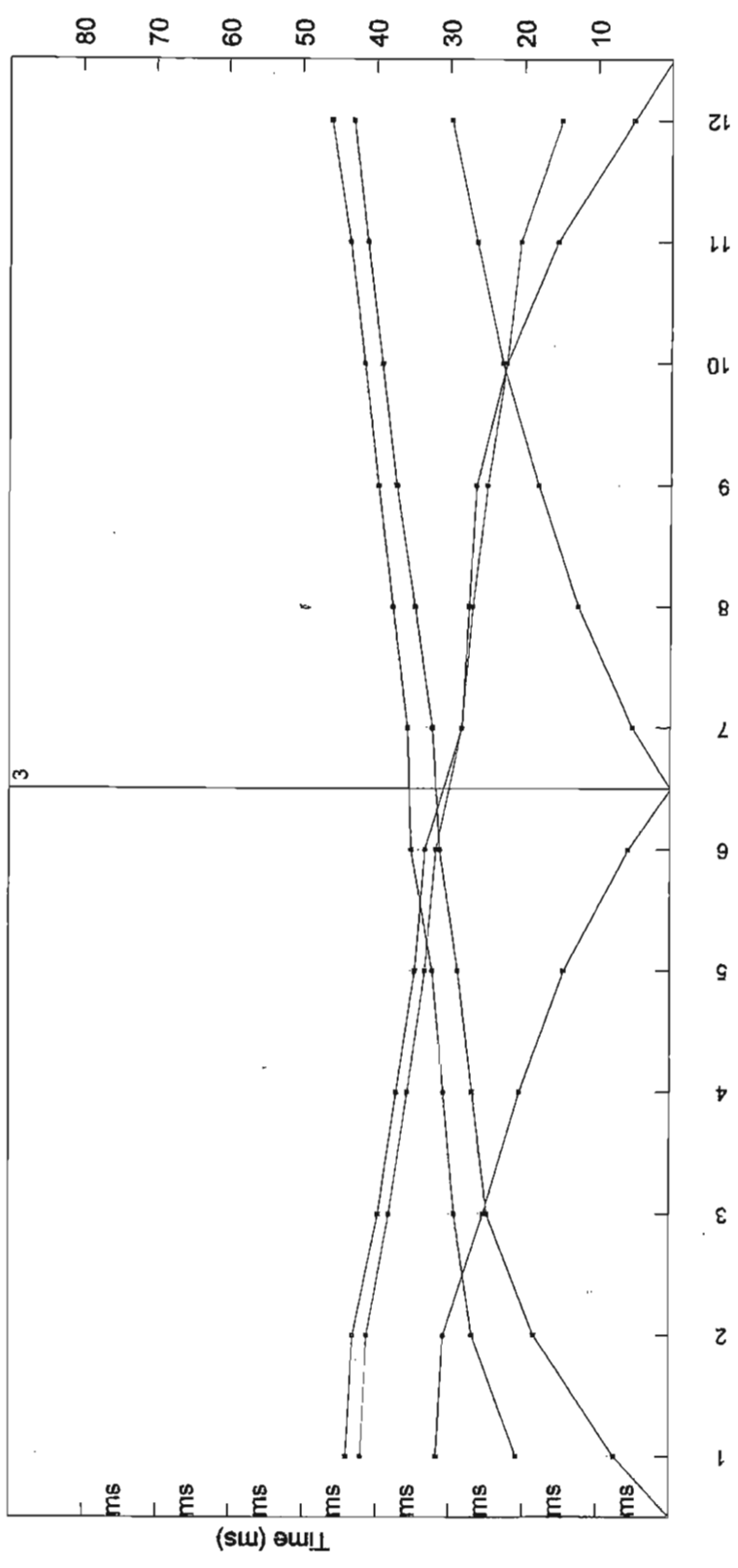
**ESTRATTO CATASTALE 1:2000**

Comune di Baiso Foglio 68 Mappali 7 e 17

DROMOCRONE - COMUNE DI BAISO - Località CARNIONE - Sig. Piccinini

Sud

Nord



**VALORI VELOCITA' ONDE SISMICHE - COMUNE DI BAISO - Località CARNIONE**

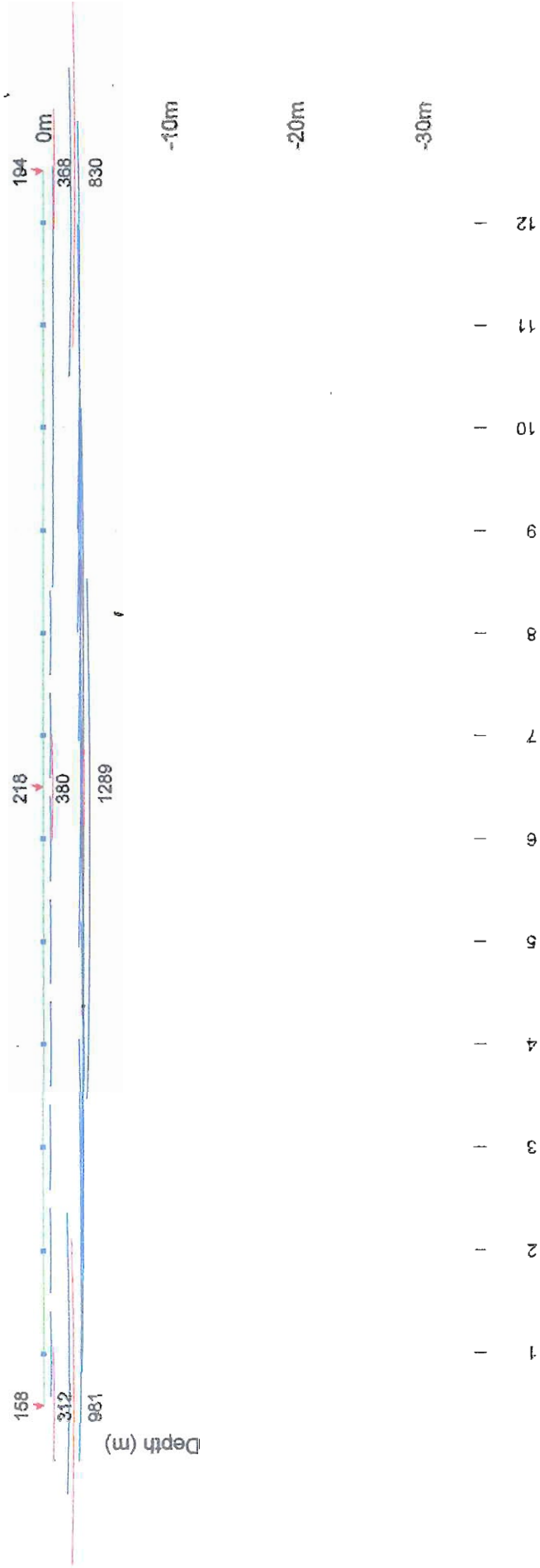
Sud

Nord

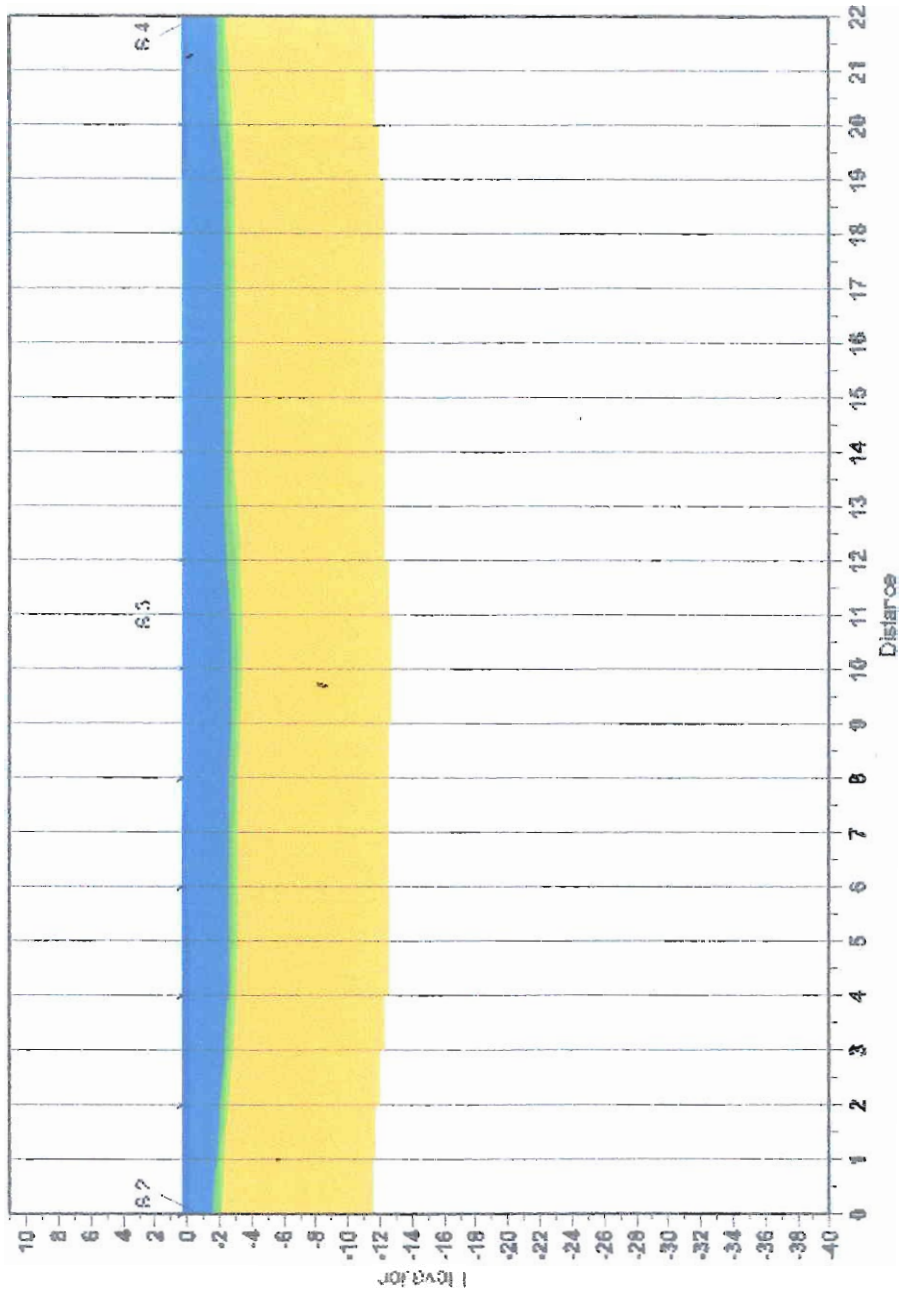
Shot 2

Shot 3

Shot 4



COMUNE DI BAISO - Località CARNIONE - Sig. Piccinini



ABC method depth computation